

# WEEKLY ROUND-UP

BLYTHE BRIDGE HIGH SCHOOL & SIXTH FORM

SEPTEMBER 2024 - ISSUE 141

## SPECIAL OPEN EVENING EDITION

**Blythe Bridge High School & Sixth Form**

**Pride Respect Kindness**

**Year 6 Prospective  
Parents' Evening**

**Thursday 19<sup>TH</sup> September**



**A proud partner school of John Taylor MAT**



### EXCITING FUTURE

We are delighted to share that work starts on our new £1 million multi-use sports facility in Spring 2025. This eagerly anticipated addition to our school will provide space for sports, lunchtime gatherings, film club and examinations. Viewing platforms will be installed throughout the build phase in order for teaching & learning to take advantage of this exciting project. See right for an artist's impression of the new facility.



### YEAR 6 OPEN MORNINGS



Year 6 children in non-partnership schools who have not had the opportunity to participate in our extensive transition activities are invited to visit our school on **Tuesday 15th October**. To register your interest please contact Mrs Pereira via Reception.

### WELCOME

Welcome to this special edition of our weekly newsletter.

In addition to the usual updates from around the school, we have included information relating to the Year 6 Prospective Parents' Evening which we will be holding in school on Thursday. We are all looking forward to giving you a feel of what life is like in our school. We are sure that you will find the evening enjoyable and beneficial as you make important decisions about school places for September 2025.

Mrs Johnson

**#PRIDERESPECTKINDNESS**

### TOMORROW'S TEACHERS

Following the success of our first cohort of Tomorrow's Teachers, 16 Year 12 students have enrolled for the programme this year.

Tomorrow's Teachers provides an insight into teaching through twelve modules all designed to provide an engaging and dynamic introduction into careers in education.



## AFRICAN ADVENTURES

Friday 13th might be unlucky for some, but not for Mrs Baines, who held a fundraising dinner dance and auction as part of her fundraising for Kenya 2025 with Port Vale, where she is one of three staff accompanying the Year 10 group.

Mrs Adams and the 2026 team (our current Year 9) will be offering refreshments in the student leadership area at our open evening to raise funds for their visit. Students involved in the African Adventure travel to Kenya and volunteer in one of two areas, either teaching and sports coaching or building and renovation. Their time and efforts make a real difference and in return students develop new skills through the project and learn about a new culture in this once in a lifetime opportunity.



## PVFC STARS



## 60TH BIRTHDAY CELEBRATIONS

If you attended Blythe Bridge High School & Sixth Form as a student, or you were a member of staff in the last 60 years and would like to be involved in our celebrations please email

[blythe60@blythebridge.staffs.sch.uk](mailto:blythe60@blythebridge.staffs.sch.uk)



## SUMMER RESULTS 2024

We celebrated remarkable results in the summer, achievements included:

Students gaining 4+ in English & Maths 72%  
Students gaining 5+ in English & Maths 50%

44% (24% national) of students gained the EBacc with a standard pass and 29% (16% national) with a strong pass.

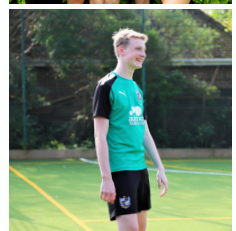
Across other areas of the curriculum, 25% of history candidates gained a 7, 8 or 9 grade, with 24% of students in DT and 25% of candidates in RE gaining those grades. Outstanding results were also celebrated by our dual linguists who achieved 9s and 8s in French and Spanish

At A level, our Year 13 students achieved an impressive set of results achieving an average grade of a C.

The sun was shining on Saturday when Mrs Johnson and Mr Goodwin joined some of the sixth form students who are part of the football partnership with Port Vale FC Foundation. After photographs had been taken pitch side, they enjoyed seeing Port Vale get a 1-0 win against Chesterfield. Training for the Blythe Bridge team continues this week with coaches from Vale . Good luck to you all!

## ELEVATE YOUR FUTURE WITH OUR SIXTH FORM

Our Sixth Form offers a range of opportunities. From Tomorrow's Teachers to the The Port Vale Football and Education Programme which allows students to study and train alongside A Levels and/ or BTECs. The Young Enterprise Company programme supports students in setting up and running a student company with support from one of their company volunteers. The extended project qualification extends and develops students' academic abilities beyond A-level knowledge to prepare for university or future careers. Please get in touch with [sixthform@bb-hs.co.uk](mailto:sixthform@bb-hs.co.uk) or [office@bb-hs.co.uk](mailto:office@bb-hs.co.uk) if you would like to learn more about our Sixth Form.



PRIDE RESPECT KINDNESS

**SIXTH FORM  
OPEN EVENING**

**THURSDAY 24<sup>TH</sup> OCTOBER**

**A PROUD PARTNER SCHOOL OF JOHN TAYLOR MAT**

[office@bb-hs.co.uk](mailto:office@bb-hs.co.uk)

**01782 392519**







## DETAILS ABOUT NEXT WEEK

### AUTUMN TERM

#### Citizenship

Year 7 - Personal qualities

Year 8 - Cohesion

Year 9 - Free press & censorship

Year 10 - Political participation

Year 11- Revision techniques

### SIXTH FORM

Year 12 are developing independent study skills and will be introduced to VESPA a study programme supporting post-16 students whilst Year 13 are finalising their UCAS and apprenticeship applications. Year 13 will have an assembly next week with a focus on how current affairs and how keeping abreast of current issues can support with their academic studies.

### KEY DATES

Wednesday 25th September - Year 11 An Inspector Calls theatre visit

Thursday 26th September - European Day of Languages

Thursday 26th September - Key stage 4 & 5 Chester Zoo visit (Humanities and Science cross curricular)

Friday 27th September Macmillan staff house coffee morning

### EXTRA-CURRICULAR SPORT

24th September - Girls Cross-country (A)  
& Year 11 boys football (H)

26th September - Year 9 orienteering (H)

### BREAKFAST CLUB

Our breakfast club, Kickstart, allows students arriving to school between 8:10 and 8:40am to meet with friends and get some toast, juice or a warm drink. Even better - it is completely free to use.

Organised by Mrs N Johnson and supported by Year 11 prefects it has been a great addition to our provision. It is lovely to see so many of our new Year 7 students starting to use this facility.



### STUDENT LEADERSHIP

Mr K Knight is offering an opportunity for students to join the school podcast. The opportunity is open to all year groups and includes roles such as researchers, editors, presenters, writers, and those interested in marketing. If this sounds like something you'd be interested in, you can join the team in room 5 after school on Wednesdays. Check out the latest episode by scanning the QR code below.



### NEXT WEEK'S ASSEMBLIES

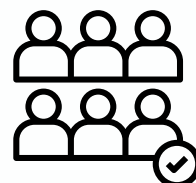
Year 7: Introduction to careers

Year 8: Careers

Year 9: Careers

Year 10: Careers

Year 11: Post 16 choices



## PASTORAL CARE

We know that positive relationships create successful communities so we work together to promote high expectations for all students across the school, leading by example to model pride and excellence, values which underpin the school's ethos. We work hard to develop students and encourage them to



**Mrs S Kadri Senior Deputy Headteacher**

become proud, kind and respectful citizens who are able to play their part and become actively involved in public life as adults. We operate a 'horizontal' based system where students are placed together in year groups under the care and guidance of a form tutor. The form tutor is the first point of contact for each student, providing advice and guidance on a daily basis. Each year group is led by a Head of Year who has an overview of the year group both from an academic and pastoral perspective. They set the tone, model expectations and are a visible daily presence around school.

We operate a strong and effective pastoral system based upon these traditional values of pride, respect and kindness.

Form tutors work with students on a day-to-day basis and address any problems be they of an academic, vocational, social, emotional or behavioural nature. Every staff member has a pastoral role. With the support of other specialists, we create a network of care that supports students throughout their time at school - helping them to navigate the complexities of adolescence. We strive to pre-empt problems before they arise and to provide compassionate care when it is needed most.

## A MESSAGE FROM MISS JAMES HEAD OF YEAR 7

It is an absolute delight to see how well our current Year 7 have settled into Blythe Bridge High School & Sixth Form. Students are happy with their friends,



maintaining relationships from primary school but also building new ones, they have embraced all that is on offer through our extra curricular programme and are thoroughly enjoying the expanse of our curriculum. You will meet many of them tonight who are excited to share their journey with you, please ask them questions, I am confident they will make us proud.

## DUKE OF EDINBURGH

Blythe Bridge High School and Sixth Form has been successfully running The Duke of Edinburgh's Award (DofE) over a number of years and we will very shortly be launching this exciting opportunity to all students who are in Year 9 (Bronze Award), Year 10 (Silver Award) and recommencing this year our Sixth Form students (Gold Award).

DofE is a voluntary nationally recognised personal development programme for all young people aged 14-24 (not just fans of the great outdoors).

DofE encourages teamwork, social interaction and helps young people to stand out from the crowd when applying for College, University, or employment.

We will be launching the programme during October through assemblies, social media and via email.

Watch this space!



## CHARITY WORK - UHNM

Sarah O'Reilly from UHNM Charity came into school this week to discuss our future plans for fundraising, volunteering and reading with the charity. She also collected the letters our students had written thanking them for the many opportunities they have already had to work in partnership with the trust.

