

Blythe Bridge High School & Sixth Form Sixth Form Prospectus 2025-2026



Pride

Respect

Kindness



CONTENTS

PAGE

[Welcome to our Sixth Form](#)

[Sixth Form Plus](#)

[Our Curriculum](#)

[Financial Studies](#)

[Applied Science](#)

[Fine Art](#)

[Biology](#)

[Business Studies](#)

[Chemistry](#)

[Computer Studies](#)

[Criminology](#)

[Dance](#)

[Design Technology](#)

[English Literature](#)

[Early Childhood Development](#)

[French](#)

[Geography](#)

[Health & Social Care](#)

[History](#)

[Further Maths](#)

[Maths](#)

[Media Studies](#)

[Mental Health](#)

[Music](#)

[Performing Arts \(Drama\)](#)

[Philosophy & Ethics](#)

[Photography](#)

[Physical Education](#)

[Physics](#)

[Politics](#)

[Psychology](#)

[Sociology](#)

[Spanish](#)

[Sports Studies](#)

Page 3

Page 5

Page 6+

Page 7

Page 8

Page 9

Page 10

Page 11

Page 12

Page 13

Page 14

Page 15

Page 16

Page 17

Page 18

Page 19

Page 20

Page 21

Page 22

Page 23

Page 24

Page 25

Page 26

Page 27

Page 28

Page 29

Page 30

Page 31

Page 32

Page 33

Page 34

Page 35

Page 36

Page 37



WELCOME TO OUR SIXTH FORM



I am delighted that you are considering us as the place for your future studies. Our Sixth Form is one where students can achieve highly, make good friends, have excellent support and guidance from teaching staff, and take part in a wide range of extra-curricular activities. Your time in the sixth form will challenge you and you will leave with qualifications, skills and experiences that place you in a very strong position for your future.

The Sixth Form maintains a good academic record and offers a curriculum designed to suit different learners and provide excellent support through pastoral care, careers and with progression into Higher Education, apprenticeships or employment. The sixth form options evening provides a great opportunity to talk with experienced subject staff and existing students and to really get a feel of what we are like.

Why Study at Blythe Bridge Sixth Form?

We believe that there are a number of features which make Blythe Bridge Sixth Form a unique and rewarding place to study. Our Sixth Form offers a personalised experience for all of our students whilst maintaining a broad and balanced curriculum offer. We are able to provide a range of qualifications for students on both academic, vocational and combined A Level, BTEC courses or AAQ qualifications, with over 30 different subject choices for our students.

We recognise the importance placed on active learning and therefore, often have small class sizes to afford staff the ability to nurture yet challenge each individual student. We have a strong belief in enrichment activities and an effective pastoral care system to ensure that we are advancing the moral, social and personal development of all our students.

Sixth Form Options Evening/Applying to Sixth Form

If you would like to know more, please use our subject pages to give you a flavour of what we are able to offer. Our Options evening is on Thursday 23rd October 2025, which will allow students to gain more insight into the courses offered at Sixth Form. The application deadline is 18th December 2025; the application form can be found on the school website (in the Sixth Form tab) and will be live from the 23rd October 2025. All applicants will be invited to discuss their options with a member of the sixth form team. If you would like further information, please contact school.

MISS ALFORD

Head of Sixth Form

I am looking forward to meeting students and their families at our options evening and for you to meet our sixth form team and specialist Post-16 teaching staff.



Learning Environment

Students in sixth form are supported and monitored throughout their courses. Tutors and the sixth form pastoral team use termly tracking and input from teachers to mentor and provide timely support when it is needed as well as offering guidance and information about next steps. This allows students to keep on track with their predicted grades and ambitions to reach their academic potential. The PSHE programme in sixth form provides a fantastic opportunity to celebrate achievement and welcome guest speakers in assemblies. We have many links with universities, further education and apprenticeship providers who support students in making choices about futures. In addition, students will participate in our careers fair, with the opportunity to speak to local providers as well as representatives from Higher Education. The private study space and library at Blythe Bridge High School & Sixth Form provide environments for silent and independent study. Study periods are added to student timetables to support with developing effective study habits.

Sixth Form Plus

Our sixth form offers a personalised experience for all our students. The Sixth Form Plus programme, delivered by the sixth form pastoral team, supports students in paving the way to academic and personal success, developing essential skills which are highly transferable to future learning and work environments. Centred around the core 'skills builder' framework, students in our sixth form will have opportunities to develop skills such as problem solving, creativity, leadership and teamwork. Students will build a personal employability portfolio, have opportunities to work with professionals, complete research and fieldwork and benefit from the opportunity to work in teams. Students can participate in enriching activities, which include volunteering, Tomorrow's Teachers, Port Vale Foundation, Duke of Edinburgh Award, Extended Project Qualification and Young Enterprise Award.

PORT VALE FOUNDATION

If you have an interest in football, our football and education programme with Port Vale Football club provides opportunities to train and play on the girls or boys teams in the EFL Community and Education Football Alliance League.



TOMORROW'S TEACHERS

Tomorrow's Teachers provides a fantastic insight into teaching, with opportunities to explore different settings and work alongside professionals. Students will start to develop their teaching and communication skills.





Develop your research skills through completing an independent study called the extended project qualification or EPQ. An opportunity to take an additional qualification whilst studying a topic or conducting an experiment on a theme that really interests you.



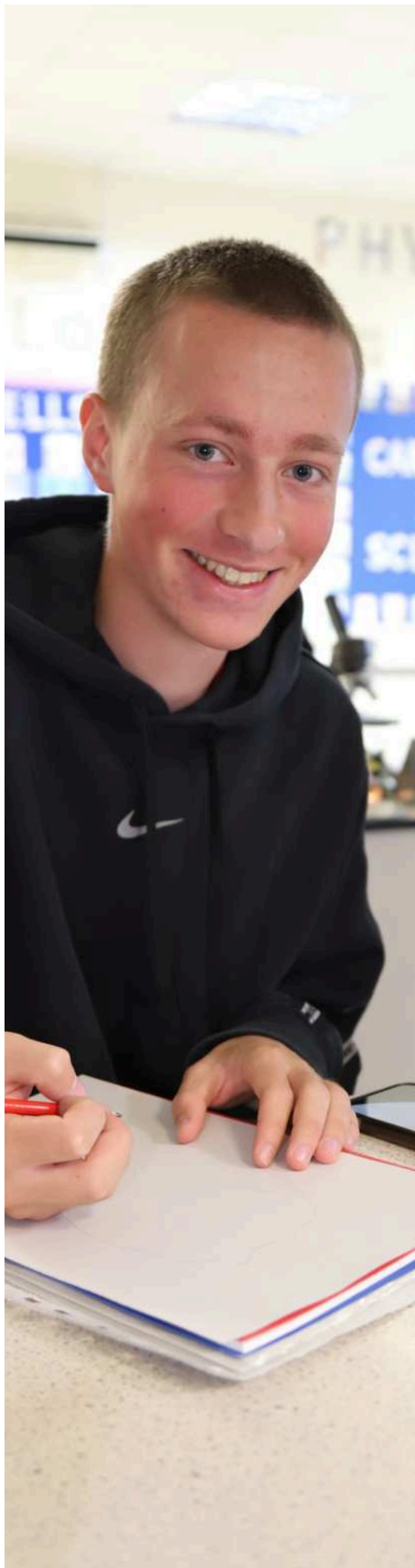
Sixth Form students have played important roles in our school productions both on stage and back stage, helping with set design. After brilliant productions of We will rock you and Matilda, this year students will be performing in Annie. Students can also continue to develop their musical talents through music lessons, orchestra, jazz band and choir.



Sixth Form students have many opportunities to develop leadership skills, our sixth form student council are invested in many of the charity and social activities of sixth form life, whilst becoming a Sixth Form Subject Ambassador, allows students to develop skills within subject departments.

We also offer the opportunity to take part in Young Enterprise Award, a practical look at how businesses operate. Students set up a business as part of a team, fundraise and produce their own products to sell at YE fairs.

Students can take part in a wide range of opportunities outside of the class room, designed to enrich students' experiences and develop life skills for beyond sixth form. In addition to the trips and visits, after school clubs and sixth form plus, students in the sixth form also have the support of a tutor who delivers the RSHE and citizenship programme. We cover themes such as study skills, road safety, budgeting, careers, university and apprenticeship applications and modern Britain. Tutors also provide academic support and guidance to learners throughout their time at sixth form.



Financial Studies

Course Overview

Level 3 Certificate Financial Studies (CeFs) is a great subject to help students with their personal finance in the classroom. This subject provides students with a greater financial understanding. Students will learn the core disciplines of financial capability and how to become responsible borrowers and sensible savers. CeFs sparks appreciation of the need for financial planning throughout life. It can also open eyes to a career in the finance sector. Students are graded A*-E and the course is the equivalent of an A Level and carries maximum UCAS points.

What you will study on this course

Unit 1 – Financial capability for the immediate and short term

- personal finance
- financial services marketplace
- financial products for managing money
- legislation and regulation on earnings
- impact of poor decision-making and unforeseen circumstances
- key features of income tax and National insurance
- how their financial needs will change through their life

Unit 2 – Financial capability for the medium and long term

- key steps for financial planning
- changing financial priorities versus needs
- financial footprint and its impact on future financing
- risk and return terms of impact severity and probability
- how personal values and beliefs affect financial decisions
- valuating their circumstances

Unit 3 – Sustainability of an individual's finances

- how financial products and services affect customer choices
- making informed financial judgements
- the impact of global events developments and ethical considerations

Unit 4 – Sustainability of the financial services system

- impact of marketing techniques employed by financial services
- impact of changes in the financial services market
- how financial services companies retain, attract and satisfy customers

Assessment Structure

Units 1 and 2 (part A) – 45-minute exam.

Units 1 and 2 (part B) – 1 hour 45-minute exam requiring essay responses to questions relating to a pre-released case study and unit content. Case studies are released 6 weeks before the exam.

Unit 3 and 4 (part A) – 1 hour exam.

Unit 3 and 4 (part B) – 2 hour exam requiring essay responses to questions relating to a pre-released case study and unit content. Case studies are released 6 weeks before the exam .

Pass threshold is 40%, graded at A*-E.

One resit permitted for each component.

Career Links

Accountant, banker, analyst, economist.



Applied Science AAQ

Course Overview

The Pearson Level 3 AAQ in Applied Science (Extended Certificate) is an Alternative Academic Qualification (AAQ) designed for post-16 students with an interest in science and aiming to progress to higher education as a route to graduate level employment. The course is the equivalent to one A Level in size; it is suitable for students looking to develop their applied knowledge and skills in science alongside two A Levels.

What will the student study as part of this qualification?

The qualification has four mandatory units covering the following topics:

- Principles and Applications of Biology – Structure and function of cells and tissues, biological molecules, enzymes and their role in organisms
- Principles and Applications of Chemistry – Structure of the Periodic Table and its implications on physical and chemical properties of substances, through analysis of different bonding methods
- Principles and Applications of Physics – Waves and their applications; force principles and their application in transportation and construction of electrical circuits
- Practical Scientific Procedures and Techniques – Practical applications across the sciences, including chromatography, colorimetry and electrical circuits.

Students have a choice from two optional units covering the following topics:

- Scientific Investigation Skills – Investigative research, including planning, data collection, analysis and evaluation.
- Contemporary Issues in Science – Contemporary scientific issues including the reliability of sources of scientific information and their associated validity.

Teaching and Learning

The department prides itself in moving with the times and using a range of teaching and learning techniques. You will have several practicals to complete to support your understanding of key concepts.

Which subjects will complement this qualification?

The following subjects would be suitable to combine with this qualification:

- Psychology
- Sociology
- Geography

What further learning will this qualification lead to?

This qualification can lead to progression to the following degrees:

- BSc (Hons) Applied Sport and Exercise Sciences
- BSc (Hons) Nursing
- BSc (Hons) Secondary Science Education

Entry Requirements

To study BTEC applied science, we recommend that students have at least grade 4 in GCSE combined science. We will consider each student on an individual basis for their suitability for the course.



Fine Art

The course typically involves a Personal Investigation portfolio and a Personal Response examination. Students develop their practical and intellectual capabilities by specializing in Fine Art, exploring painting, printmaking, sculpture, digital, and mixed media, while also researching historical and contemporary art movements. The course promotes independent thinking, aesthetic understanding, and critical judgement, encouraging personal exploration of themes and meanings through a range of traditional and digital media, culminating in a comprehensive portfolio and a sustained period of focused study. Studio 22 is a bespoke space for sixth form students, the studio is always open for art and photography students to work on their projects, access the dark room and use specialist equipment.

-Specialised Study:

Students focus on a range of 2D and 3D disciplines within Fine Art, such as painting, printmaking, sculpture, digital, and mixed media.

-Independent Learning:

The course fosters independent thinking, allowing learners to develop their own ideas, intentions, and artistic style through personal exploration of themes.

-Contextual Understanding:

Learners investigate major art movements and artists' responses to themes, understanding the historical, cultural, and social contexts of artistic practice.

-Practical Skills Development:

Students refine their skills and techniques in a variety of media and processes, including mark-making, collage, digital manipulation, and experimental approaches.

-Creative Expression:

The focus is on conveying and interpreting feelings and meanings in images and artefacts, encouraging experimentation and risk-taking.



What skills will I gain doing Fine Art?

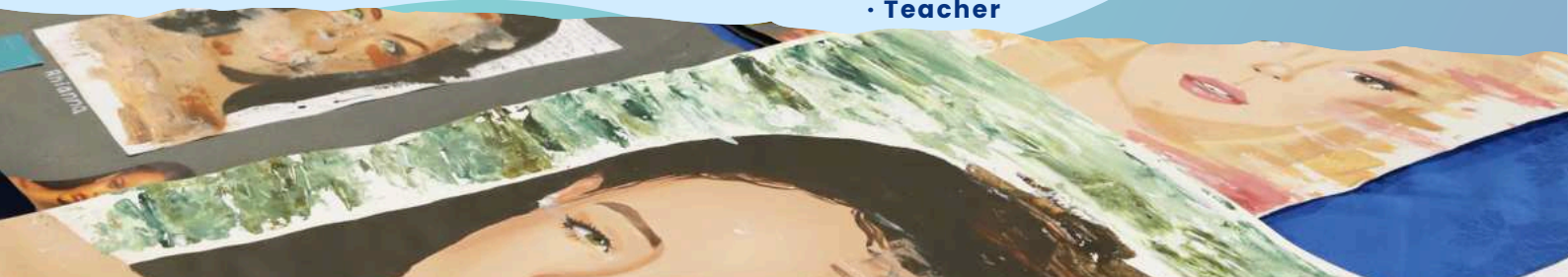
- You will gain knowledge, understanding and application of art, craft, design media (traditional and new) and technologies in contemporary societies and cultures. You will gain awareness of different roles, function, audiences and consumers of art, craft and design practice.
- You will develop and present your own ideas and outcomes through a variety of 2D and 3D materials including traditional and new media, techniques and processes.
- You will present all of your portfolio work in an exhibition at the end of your course.

What topics are covered?

A2 – 60% Personal Investigation A2 – 40% Externally set task

Careers Link

- Interior designer
- Surface pattern designer
- Product designer
- Transport designer
- Model maker
- Film producer
- Costume designer
- Set designer
- Illustrator
- Architect
- Medical illustrator
- Court illustrator
- Art therapist
- Makeup artist
- Freelance artist
- Teacher





Biology

Course Overview

The emphasis throughout the course is on increasing knowledge, developing competence and confidence in practical skills and developing problem solving. You will learn how society makes decisions about scientific issues and how science contributes to the success of the economy and society. A Level Biology is an interesting and challenging learning experience, linking key biological ideas and understanding how they relate to each other. Throughout the course, you will develop transferable skills including: investigative, problem solving, research, decision making, mathematical skills and analytical skills. A Level Biology opens up a range of possibilities for further study and careers associated with the subject. Are you aiming to be a doctor, nurse or vet? Thinking of a career in research? Interested in the environment and the world around you? A problem solver? Interested in science? Keen on practical work? Studying other sciences or maths? If so, A Level Biology is for you.

Assessment Structure

The following modules are taught at A Level:

Module 1: Development of practical skills in biology
Skills of planning, implementing, analysis and evaluation.

Module 2: Foundations in biology
Cell structure, biological molecules, nucleotides, enzymes, biological membranes, cell division, cell diversity and cellular organisation.

Module 3: Exchange and transport
Exchange surfaces, transport in animals and transport in plants.

Module 4: Biodiversity, evolution and disease
Communicable disease, disease prevention, immune system, biodiversity, classification and evolution.

Module 5: Communications, homeostasis and energy
Communication and homeostasis, excretion, neuronal and hormonal communication, plant and animal responses, photosynthesis and respiration.

Module 6: Genetics, evolution and ecosystems
Cellular control, patterns of inheritance, manipulating genomes, cloning and biotechnology, ecosystems, populations and sustainability.

There are three examination papers (2 x 2 hours 15 minutes and 1 x 1 hour 30 minutes) taken at the end of the two-year course.

Teaching and Learning

The department prides itself in moving with the times and using a range of teaching and learning techniques. A minimum of 12 practical activities are planned throughout the two-year programme and class sizes are kept small to ensure that each student reaches their potential. The science labs are well equipped for practical lessons.

Where will success take me?

A Level Biology is an excellent base for a university degree in healthcare, such as medicine, veterinary or dentistry, as well as the biological sciences, such as biochemistry, molecular biology or forensic science. Biology can also complement sports science, psychology, sociology and many more. A Level Biology can open up a range of career opportunities including: biological research, medical, environmental, forensics, sports and science communication. The transferable skills you will learn, such as problem solving, are also useful for many other areas, such as law.

Entry Requirements

To study A level Biology, we recommend that students have at least a grade 6 in GCSE biology (separate science) or grade 7 for combined science, as well as a grade 6 in maths.



"I chose A-level biology because I found it extremely interesting at GCSE so decided I would like to take it further and do it at A-level. I enjoy biology because it is fascinating to learn about and is challenging at times. Learning biology is great here because the small classes enable you to really understand and learn the concepts."
Ellie, Year 12 Biology Subject Ambassador



Business Studies

Course Overview

As a linear A Level course, business has evolved into an up to date and more relevant qualification. The use of real-life business case studies is far more frequent and the connection with external influences has greater importance. All students studying the course will study business in a variety of contexts (e.g. large/small, UK focused, global service, manufacturing) and consider:

- the importance of the context of business in relation to decision making
- the interrelated nature of business activities and how they affect competitiveness
- the competitive environment and the markets in which businesses operate
- the influences on functional decisions and plans including ethical and environmental issues
- the factors that might determine whether a decision is successful e.g. the quality of data and the degree of uncertainty
- how technology is changing the way decisions are made and how businesses operate and compete
- the impact on stakeholders of functional decisions and their response to such decisions
- use of non-quantitative and quantitative data in decision making (including the interpretation of index numbers and calculations such as ratios and percentages)

Where will success take me?

This A Level will get you started in business and give you the skills and knowledge to progress to higher education. You could go on to work for a corporation, or maybe a management consultancy. All businesses (and other organisations like charities and hospitals) need sound business skills behind them. On a more general note, A Level business provides students with the opportunities to develop important skills and relevant tools that will be helpful in many courses and for employment.



"I chose A Level business studies because I really enjoyed it at GCSE. It has helped me to understand how good business's work and it opens many different career pathways. Business gives you useful insights into how the world of work and enterprise operates".
Evie, Year 12 Business Studies Subject Ambassador

Assessment Structure

The A Level will have three exam papers at the end of the two-year course. All three papers have an equal weighting towards the overall A Level, although the papers are all different in their assessment approach, from essay questions to multiple choice.

Teaching and Learning

The department uses a plethora of teaching and learning techniques to keep students up to date with the latest business case studies. Updates and materials are provided via FROG.

A host of revision games are used by staff to make learning fun and recap on key terms and theories.

Video clips are regularly used to enhance the learning experience and relate the theory to real life business case studies.

Students regularly use computers to search for information and produce mini reports on topical business issues.

Entry Requirements

We recommend that students have a grade 4 at GCSE Maths as some number crunching and using a calculator is important. GCSE business studies is an advantage but not a requirement at A Level.

Career Link

Possible career choices with A Level business studies include management, marketing, finance, accounting, banking, retailing, manufacturing and local government.



Chemistry



Why chemistry is a valued qualification?

- An enquiring mind – chemists are interested in discovering why things happen.
- Mathematical ability – chemists are able to draw upon sound skills.
- Good powers of observation – chemists need to look at events objectively and record observations accurately regardless of what they think should happen.
- Practical ability – chemists need to plan and carry out investigations to explore phenomena.
- Adaptability – chemists need a readiness to learn new skills throughout their life to cope with advances in science and technology.
- Social skills – chemists need to talk and discuss their theories and observations with others and communicate their ideas clearly using evidence.
- A sense of humour – especially important if things do not go as planned.

Where will success take me?

Chemistry is a useful subject for the majority of STEM (science, technology, engineering and maths) careers and you will find chemists everywhere; in industry, transport, government, universities, the armed forces, the secret service, games companies, research labs and more. If you already have ideas about university courses that interest you, we recommend looking at the entry requirements to see which A Level qualifications are needed. Please see the careers board in the science department for more careers.



Course Overview

Students will 'think hard' during chemistry lessons to ensure that they develop a detailed knowledge of challenging concepts. Many concepts build on GCSE knowledge (such as atomic structure, bonding, exothermic reactions, ions, electrolysis, moles and the atmosphere) whilst new concepts (such as intermolecular forces, enthalpies, electronegativities, electron orbitals, entropy and organic reactions). Regular practical activities and experiments are carried out to support the theory being delivered. A minimum of 12 formal practical activities are carried out throughout the two-year course. These require analysis in a 'PAG' book. If criteria are met students will gain a pass grade for the practical endorsement which is a separate award to the A Level qualification. The science labs are well-equipped for practical lessons with an excellent equipment and chemical stock allowing students to work in small groups or alone.

Assessment Structure

The A Level is made up of three examination papers with questions presented as multiple choice and/or structured questions, alongside extended response questions to cover theory and practical skills. Regular assessments help students to identify areas of weakness from each module and enable them to structure their revision effectively.

Specification – OCR (Salters B) – The chemistry content is split into ten teaching modules:

- Elements of life, Developing fuels, •Elements from the sea, •The ozone story
- What's in a medicine?, The chemical industry, Polymers and life, Oceans, Developing metals, Colour by design

Entry Requirements

To study A Level Chemistry, we recommend that students have at least a grade 6 in GCSE chemistry (separate science) or grade 7 for combined science, as well as a grade 7 in maths.



"I chose A-level Chemistry because I find the subject both fun and fascinating, especially exploring organic chemistry and how it connects to real-life applications. The teachers are really supportive and make lessons enjoyable with practical experiments that bring the theory to life. Studying chemistry has helped me develop problem-solving and analytical skills, which I know will be valuable for my future aspiration of becoming a pilot".

Om, Year 12 Chemistry Subject Ambassador

Computer Science

Course Overview

What role do computers play in the world today and what things could computers do in the future? Computer science looks at the technology inside of the computer and how we utilise this technology to solve problems. You will develop an understanding of how the computer works, how data is stored, how some of the common algorithms work and how to tackle complex problems by breaking them down into smaller problems.

Assessment Structure

A Level – Unit One: Computer systems (40%)

Learners will study:

- Characteristics of computer systems.
- Software development.
- Exchanging data.
- Algorithms & data types.

Unit Two: Algorithms and programming (40%)

Learners will study:

- Elements of computational thinking.
- Problem solving and programming.
- Algorithms to solve problems and standard algorithms.

Unit Three: Programming project (20%)

Learners will carry out:

- Analysis of a problem.
- Design the solution.
- Develop the solution.
- Evaluation.

How you will be assessed

Examinations involve answering short and extended questions. You will also complete a project in year 13 on a topic of your choice. Past projects have included: 'glucose monitoring app for Android', 'arcade shooters', 'flight simulators' and a 'ukulele tuning tool'.

Where will success take me?

The British Computer Society recently highlighted an alarming down turn in computer science graduate projections which could imperil the long-term success for the nation's expanding IT economy. "The future success of the British IT economy, particularly in the nanotechnology, biotechnology sectors and cyber security, will rely on the availability of computer science graduates." The OCR computer science course will prepare you for further education, specifically in a globally expanding ICT/computer science field. From games or web-design to systems analysis, high quality practitioners will always be required.

How you will learn

You will learn through discussion, group-work, reading, research and writing essays and programs.

Entry Requirements

The course involves problem solving and maths; a grade 5 maths or above is ideal. You do not need to have studied computer science at GCSE, although it is an advantage.

Career Link

Application developer, cyber security analyst, forensic computer analyst, software engineer, SEO specialist, web developer, penetration tester, games developer.

"I picked computer science because I found it challenging, I find it enjoyable because computer science is interesting especially coding and you will always learn from it in a practical way. The teachers are great at explaining the content and the class atmosphere is engaging".

Romeo Connor Year 12 Computer Science Student Ambassador



Criminology

Course Overview

Criminologists examine every conceivable aspect of deviant behaviour. This includes the impact of crime on individual victims and their families, society at large, and even criminals themselves. Some of the specific areas that criminology covers include:

- Frequency of crimes.
- Location of crimes.
- Causes of crimes.
- Types of crimes.
- Social and individual consequences of crimes.
- Social reactions to crime.
- Individual reactions to crime.
- Governmental reactions to crime.

The study of criminology is vast. Some areas that you will study include investigating types of crime, for example hate crime, honour crime, mafia crime and immoral crimes. You will also learn about who the victims of these crimes are and why people sometimes do not report them due to individual, social and cultures factors. You will look at campaigns for law change and create your own campaign. Additionally, you will also be taught biological and social explanations of crime. Here you will debate whether a criminal commits murder due to their genetics or brain abnormalities or if it is due to the environment they were raised in. In the second year you will study crime scenes, the role of DNA in identifying an offender and learn about the criminal justice system. We try to make your experience as hands on as possible; this includes opportunities to meet people who work in the sector, trips and interactive classroom activities.

How you will learn

You will learn through discussion, group-work, reading, research and writing essays.



How you will be assessed

Content covered in Year 12

Unit 1: Unit 1 content- Changing Awareness of Crime (Controlled Assessment)

- Analyse different types of crime.
- Explain the reasons that certain crimes are unreported.
- Explain the consequences of unreported crime.
- Describe media representation of crime and the consequences.

Unit 2: Criminological Theories (examination)

- Compare criminal behaviour and deviance.
- Describe biological and sociological theories of criminality.
- Evaluate the effectiveness of criminological theories to explain causes of criminality.

There are four units, each worth 25% of the overall grade. Units 1 and 3 are assessed through controlled assessments. These will be assessed February/March of each year and are 1.5-hour long examinations. Unit 2 and 4 are assessed through external examinations assessed in the June of each year of study.

Where will success take me?

Degrees such as BA Criminology, BSc Criminology, BA Criminology and Criminal Justice, BSc (Hons) Criminology and Psychology, LLB (Hons) Law with Criminology, BA (Hons) Criminology and Sociology, BA (Hons) Criminology, BSc (Hons) Psychology and Sociology, BSc Criminology with Law. Alternatively, the qualification allows learners to gain the required understanding and skills to be able to consider employment within some aspects of the criminal justice system, e.g. the National Probation Service, the Courts and Tribunals Service.

Entry Requirements

No specific subjects are required but a good level of English and maths would be advantageous.

"Criminology is honestly a really interesting subject. We look at why people commit crimes, real-life cases, and how the justice system works. I chose to study criminology because I am interested in understanding people's behaviour and the factors that influence their decisions. the subject helps me develop empathy and critical thinking skills that will support me in my future career as a nurse. The best thing for me about Sixth Form is the independence, you get a lot more freedom in how you study and manage your time, but the teachers are also always there to help when you need it. This Sixth Form definitely offers a great way to learn if you prefer smaller, more supportive classes."

Lilly-Mai Year 12 Criminology Subject Ambassador



Dance

Course Overview

An exciting and diverse specification accessible for all, A Level dance is a dynamic qualification which encourages students to develop their creative and intellectual capacity, alongside transferable skills such as team working, communication and problem solving. All of these are sought after skills in both higher education and employment and will help students stand out in the workplace, whatever their choice of career. This specification reflects both historical and current dance practices, making it more relevant, and inspires a lifelong passion and appreciation for dance. We recognise the role of dance in young people's lives and our students will be able to study a range of dance styles. We have set relevant and exciting sources for all choreography and broadened our areas of study. Students can perform and choreograph in a style of their choice for the group work assessment, provided it meets the assessment criteria. The course gives students the opportunity to develop a range of skills, fostering leadership skills, confidence and ability to work closely with others, as well as independent study outside of the classroom.

Assessment Structure

A Level dance

Component 1: Performance and choreography – 50%

- Solo performance linked to a specified practitioner within an area of study.
- Performance in a quartet.
- Group choreography.
- Practical exam.

Component 2: Critical engagement – 50%

Knowledge, understanding and critical appreciation of two set works.

- One compulsory set work within the compulsory area of study.
- One optional set work.

A level examinations involve a written paper combining a series of short answers on the set work and two essay questions on the selected area of study. Students will also be examined by a visiting external moderator in their quartet/solo and choreography.

Entry Requirements

Students would benefit from having some dance technique. It would also be good if students have studied GCSE dance however, it is not vital.

Other Information

Our course gives students the opportunity to develop a range of skills; fostering leadership, confidence, ability to work closely with others as well as independent study outside of the classroom.

- Teaching groups are often small.
- Dance complements a range of A Level subjects in drama, PE, sports studies and art.
- For those with university in mind, there are many universities that offer joint honours or single honours courses in dance.

Students are given the opportunity to deliver dance in the local feeder primary schools; we also attend many external theatre trips and perform in many local showcases as well as Move it! at the Excel in London which is a huge careers and networking event for all careers in dance.





Design & Technology

Course Overview

A Level design & technology provides students with the opportunity to identify market needs and opportunities for new products, initiate and develop design solutions, and make and test prototypes. Product design is a material specialism and can be selected within the course making it suitable for students with past experiences in product design or graphic products. Lessons are varied and skills and knowledge will be delivered through mini projects, focussed practical tasks as well as structured theory-based learning. All are designed to prepare students for both external examinations and the non-examination assessment. Group sizes are small allowing learning and support to be more personalised for each student's needs. Students will develop the ability to draw on and apply a range of skills and knowledge from other subject areas, including the use of mathematics and science for analysis and informing decisions in design. Students will have the confidence to innovate and produce creative design solutions as they develop their own design brief with a client/end user. If you are interested in how things work and how products can be improved, then product design would be a suitable choice.

Assessment Structure

Examinations (20% + 30% = 50%)

Students will be required to apply knowledge and understanding of a wide range of materials, including modern and smart materials and processes used in product design and manufacture. They will be required to develop an understanding of contemporary industrial and commercial practices.

Non-Examination Assessment (NEA) (50%)

The purpose of this component is to undertake a substantial design, make and evaluate project which will test students' skills in designing and making

a prototype product. Under consultation with a client, students are required to identify a problem and design context from which they can develop a range of potential solutions before realising one through practical making activities. In this project, students will be encouraged to use creativity and imagination when applying iterative design processes to develop and modify designs, and to design and make prototypes that solve real world problems.

A typical design portfolio would include:

Investigation into a target user/client and fully analyse their needs, a specification produced through consultation with the client, creative range of realistic ideas.

•2D and 3D CAD.

•Final design solution.

•Manufactured prototype.

•Testing.

•Client testing.

Entry Requirements

GCSE Design and Technology grade 4 or above. Mathematics at 5 or above would be advantageous but not essential.

Where will success take me?

Design and technology opens the door to many exciting careers including engineering, product/industrial design, set design and CAD technician. See the DT careers wall for a more extensive list.



"I am subject ambassador of D.T. I enjoy my subject because it helps me broaden my horizons with new ideas and skills. I'm planning in carrying on with D.T in university and develop it into a career."
Isobel, Year 12 DT Subject Ambassador

English Literature

Course Overview

A Level English literature involves studying how great writing enables the exploration of many of life's fundamental themes: love, loneliness, prejudice, bravery and perseverance to name but a few. Reading, discussing and writing are key. You will be expected not just to read, but to develop the skill of thinking critically about what you read and of analysing texts to work out how the author's use of situation and language create powerful impressions. You will need to explore your own emotional response to writing and be able to discuss it, in class and through your own writing, and to argue constructively for your point of view. There are often no 'correct' responses to issues or questions raised in English literature, so you need to be open minded and willing to hear and discuss the opinions of others. Literature is language at its most expressive and insightful.

Component 1: Poetry

Written examination: 2 hours (120 marks) 30% of qualification

Section A: Poetry pre-1900 (open-book, clean copy)

John Milton: Paradise Lost IX (Oxford)

Section B: Poetry post-1900 (open-book, clean copy)

Philip Larkin: The Whitsun Weddings (Faber) & Carol

Ann Duffy: Mean Time (Picador)

Component 2: Drama

Written examination: 2 hours (120 marks) 30% of qualification

Section A: Shakespeare (closed-book) Hamlet

Section B: Drama (closed-book) John Webster: The

Duchess of Malfi (Methuen), Tennessee Williams: A

Streetcar Named Desire (Penguin Modern Classics)

Component 3: Unseen Texts

Written examination: 2 hours (80 marks) 20% of qualification

Section A: Unseen prose: students respond to one question from a choice of two. Each question will offer an unseen prose passage for analysis.

Section B: Unseen poetry: students respond to one question from a choice of two. Each question will offer an unseen poem or poetry extract from any period.

Component 4: Prose Study

Non-examined assessment: 80 marks (20% of qualification).

One 2500–3500 word assignment based on the reading of two prose texts from different periods, one pre-2000 and one post 2000, nominated by the student.

Entry Requirements

Because of the demands of this as a facilitating subject, we would normally expect you to have a 6 in either English language or English literature at GCSE.

Career Link

English literature is a highly respected A Level, one of the Russell group 'facilitating' subjects. As well as an English literature degree itself, students of literature might go on to study for university degrees in a range of subjects including: history, sociology, psychology, drama, theatre studies and law. Even medical schools value the subject highly. It is also very effective in developing transferable skills such as interpretive abilities, communication, an understanding of how language works, close analysis, and the ability to construct a well-argued case. These are highly valued in a range of graduate careers such as teaching, business and finance, journalism, publishing – even politics.



"I study English Literature alongside Chemistry and Physics because they demonstrate a wide range of skills. Both English and STEM subjects develop critical thinking skills, problem-solving, and attention to detail. However, English Literature also develops additional skills, such as communication (both written and verbal), emotional intelligence, and nuanced argumentation (learning to build a balanced argument with different ideas instead of always searching for one "right" answer). I've found the A-Level course more enjoyable than GCSE because we're encouraged to develop our own opinions and explore open questions that can be interpreted in many ways. In the poetry component, we look at the collection as a whole rather than treating each poem separately. This enables us to gain a deeper understanding of the work and what the poet's ideas and perspectives are."



Lucy, Year 12 English Subject Ambassador

Early Childhood Development

Course Overview

The BTEC National Extended Certificate is a collection of units that, when combined, are equivalent to one A Level. The qualification offers learners the experience of a vocational qualification that is attractive to, and recognised by, universities and employers alike.

The Extended Certificate gives students a broad base of underpinning knowledge and skills in preparation for employment or further study in the field of child development, and for Higher Education, as well as professional degrees such as teaching, family support worker, social work, paediatrics, specialist mental health nursing, counselling, paramedic sciences, and many more.

Early Childhood Development AAQ is one of the only courses where exams can be re-taken, to give you the very best chance of success. It attracts UCAS points that are equivalent to separate A Levels. Early Childhood Development will help you to access a whole host of degree courses; for example, if you wish to enter careers such as nursing, midwifery, counselling, teaching, social work, or other health & social care related jobs such as physiotherapy, childhood studies, mental health promotion and treatment, addiction studies, youth work and crime prevention.

Assessment & Structure

50% exam and 50% coursework both internally and externally moderated.

All exams can include a resit opportunity – A Levels do not offer this.

Units cover a wide range of health and social care topics, examples of units covered:

- Children's Development
- Keeping Children Safe
- Play and Learning
- Research and Reflective Practice in an Early Childhood Setting

Entry Requirements

BTEC Tech Award Level 2 Health & Social Care at a merit is an advantage or GCSE English at 4 or above.

Extra-Curricular Opportunities

Virtual Work Experience and Industry Talks

The HSC department has, for the second year running, seen students' complete courses in online virtual work experience offered by Stoke on Trent and Staffordshire NHS students have been able to interact with current professionals working within Stoke-on-Trent and Staffordshire questioning them about their professionals' roles and responsibilities and route into their professions.

This course lends itself very well to supporting students interested in taking part in "Tomorrow's Teachers" and we support students in going on placement in local primary schools and Early Years settings to facilitate their vocational learning.

Students have also been able to attend talks given by leaders in mental health, equality, diversity and human rights as well as charities involved with suicide prevention. This has been highly influential in ensuring our BBHS Sixth formers stand out against other applicants when it comes to university applications and employment. The department have also been extremely lucky in the past to be able to continue to work alongside RSUH and Port Vale FC's Golden Valiants where Health and Social Care students can support and, in some cases, run sociable events/activities for service users.



"I picked early childhood development as it is a very interesting and fun subject, I also find it enjoyable as the information you learn about is linked to real experience. The good thing about studying here is that the teachers are very supportive and encouraging and explain everything so you don't feel confused. The subject is enjoyable and the units are engaging to learn about."
Freya, Year 12 Childhood Subject Ambassador

French

Course Overview

The A Level French course is designed to encourage students to develop their understanding of the spoken and written forms of French. Throughout the course, students will learn how to communicate confidently, clearly and effectively in French for a range of purposes through the study of a range of contemporary issues which are relevant to today's young people. The important skills of translation, debate and critical evaluation are developed during the course. In addition to linguistic study, students will develop a greater awareness and understanding of the contemporary society, cultural background and heritage of French and other francophone countries. In Year 13, students complete an individual research project on a topic of their choice, as well as studying francophone literature and film. This course provides an excellent foundation to Higher Education, whilst forming capable linguists for the increasingly competitive global economy.

Assessment & Structure:

Year 12 Topics

Social Issues & Trends

Aspects of French speaking society- current trends:

- The changing nature of the family.
- The 'cyber-society'.
- The place of voluntary work.

Political and artistic culture

Artistic culture in the French speaking world:

- A culture proud of its heritage.
- Contemporary francophone music.
- Cinema: the 7th art form.

Year 13 Topics

Social Issues & Trends

Aspects of French Speaking Society- current issues:

- Positive features of a diverse society.
- Life for the marginalised.
- How criminals are treated.

Political and artistic culture

Artistic culture in the French speaking world:

- Teenagers, the right to vote and political commitment.
- Demonstrations, strikes—who holds the power?
- Politics and immigration.

Cultural Aspects:

Study of a play / novel by a francophone playwright / author.

Study of a film by a francophone director.

How will you be assessed?

Paper 1 – Listening, reading & writing (50%) – written examination –2.5 hours.

Paper 2 – Writing (20%) – written examination –2 hours.

Paper 3 – Speaking exam (30%) – spoken examination –16-18 minutes.

Career Link

Employers value language skills and research has shown that using language skills in business opens the door to a wide range of economic, social and personal benefits. Employers value language skills for the following reasons:

•Employers are looking to employ people with conversational language skills.

•Customers addressed in their mother tongue are much more likely to do business with you.

•Studying a foreign language improves your oral and written skills in English too, and also helps develop key communication skills that are crucial in the workplace.

Entry Requirements

You will need to achieve a grade 6 or higher at GCSE and have completed Higher Tier papers.



"I chose to study French as in the future I would like to study and eventually move abroad to either France or Switzerland. I enjoy French because I have always achieved good grades in the subject, therefore I found it best to continue, particularly as it provides the possibility of many career opportunities. My teachers ensure that I understand the content before moving on and help me if I am struggling. Post my A-level studies, I aspire to become a nuclear physicist, with the best chance for career progression being in the aforementioned countries."
Lucy, Year 12 French Subject Ambassador

Geography

Course Overview

Geography is useful in many ways. As a preparation for the world of work or further education, or simply as an enjoyable and interesting subject. Geography is widely accepted as a good balanced subject which helps you to:

1. Understand the major issues and problems in the world.
2. Have some understanding of different cultures and different processes that operate globally.
3. Acquire a variety of useful job skills including collecting, analysing and evaluating data.

Assessment & Structure:

Component 1 – Physical Geography – 40% of the A Level

Section A: Water and carbon cycles.

Section B: Coastal systems and landscapes.

Section C: Hazards.

Component 2 – Human Geography – 40% of the A Level

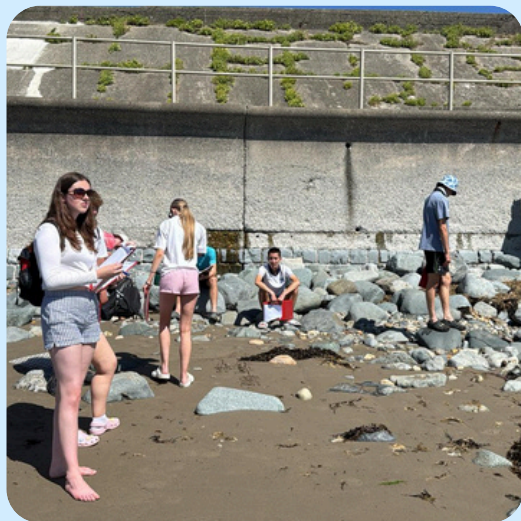
Section A: Global systems and global governance.

Section B: Changing places.

Section C: Contemporary urban environments .

Component 3 – Geographical Investigation (NEA) –20% of the A Level

Students complete an individual investigation which must include data collected in the field. The individual investigation must be based on a question or issue defined and developed by the student relating to any part of the specification content.



Entry Requirements

It is recommended that students achieve a strong pass in GCSE geography. Strong results in GCSE English and maths will be beneficial.

Career Link

Careers linked to geography could include – cartography, environmental consultancy, recycling, police, town planning, travel & tourism, teaching, local government work, insurance, transport industries, banking and commerce, cartography and meteorology, mining and energy, agriculture & horticulture.

Other Useful Information

As part of the course, pupils are expected to undertake fieldwork which will be assessed as part of an NEA which is completed in Year 12 and 13.

Students attend a four-day residential visit at the end of year 12 to North Wales. In previous years students have visited Carding Mill Valley, Ainsdale Sand Dunes (near Southport), Castleton, Hanley, Shelton and Stafford as well as attending a number of revision workshops in Manchester and at Staffordshire University.



"I picked geography because I enjoy it, and find it interesting! I also would like to do something with geography in the future."

Georgia, Year 12 Geography Subject Ambassador

Health & Social Care

Course Overview

The BTEC National Extended Certificate is a collection of units that when combined are equivalent to one A Level. The qualification offers learners the experience of a vocational qualification that is attractive to and recognised by universities and employers alike. The Extended Certificate gives students a broad base of underpinning knowledge and skills in preparation for employment or further study in the field of health or social care and for Higher Education as well as professional degrees such as physiotherapy, paediatrics, specialist mental health nursing, counselling, social work, paramedic sciences, teaching and many more.

Health and Social Care is one of the only courses where exams can be re-taken, to give you the very best chance of success. It attracts UCAS points that are equivalent to separate A Levels. Health & Social Care will help you to access a whole host of degree courses, for example, if you wish to enter careers such as nursing, midwifery, counselling, occupational therapy, teaching, social work, or other health & social care related jobs such as physiotherapy, childhood studies, mental health promotion and treatment, addiction studies, youth work and crime prevention.

Assessment & Structure

50% exam and 50% coursework both internally and externally moderated. All exams can include a resit opportunity – A Levels do not offer this.

Units cover a wide range of health and social care topics, examples of units covered:

- Human Lifespan Development.
- Human Biology and Health
- Principles of Health and Social Care Practice

Plus one of the following optional units

- Health, Policy and Wellbeing
- Promoting Health Education
- Safe Environments in Health and Social Care
- Health Science



Entry Requirements

BTEC Tech Award Level 2 Health & Social Care at a merit is an advantage or GCSE English at 4 or above.

Extra-Curricular Opportunities

Virtual Work Experience and Industry Talks

The HSC department has for the second year running seen students' complete courses in online virtual work experience offered by Stoke on Trent and Staffordshire NHS, students have been able to interact with current professionals working within Stoke on Trent and Staffordshire questioning them about their professionals' roles and responsibilities and route into their professions.

Students have also been able to attend talks given by leaders in mental health, equality, diversity and human rights as well as charities involved with suicide prevention. This has been highly influential in ensuring our BBHS Sixth formers stand out against other applicants when it comes to university applications and employment. The department have also been extremely lucky to be able to continue to work alongside Port Vale FC's Golden Valiants where Health and Social Care students can support and, in some cases, run sociable events for the Port Vale community. Students have been privileged to have met executives from the English Football Association and the Lord Lieutenant for Staffordshire whilst supporting the Golden Valiants group at Port Vale.



"As a health and social care ambassador, I can gain more leadership skills in a subject that will help me reach my dream of being a midwife. I enjoy my subject as it is something I am very passionate about and it provides me with many opportunities to learn about the care, passion, and values needed to continue on the path of health and social care. It is a fulfilling subject and knowing that it will prepare me to one day help with my career makes me feel excited and eager to learn in my subject."

Lily, Year 12 HSC Subject Ambassador

History



Course Overview

Students choosing to study history will follow a course by Edexcel. The course gives students the opportunity to develop a range of transferable skills such as critical and analytical thinking, the ability to express complex ideas clearly and the ability to think for themselves. History benefits from small teaching groups and the subject complements a range of other A Level subjects such as English and philosophy and ethics and. For those with university in mind, entry to any arts or humanities course can be gained with a history A Level, such as archaeology and law.

Assessment and structure

Four units make up the A Level for history.

Unit 1F – In Search of the American Dream: the USA, c.1917–96

This option comprises a study in breadth, in which students will learn about the dramatic political, economic and social transformation of the USA in the twentieth century, an era that saw the USA challenged by the consequences of political, economic and social inequalities at home and of its involvement in international conflict.

The focus is on developments and changes over a broad timescale and so the content is presented as themes spanning the duration of 1917–80. This option also contains a study of historical interpretations on a broad question, which is contextualised by, and runs on from, the themes: what impact the Reagan presidency had on the USA in the years 1981–96.

Unit 2F.2 – South Africa, 1948–94: from apartheid state to ‘rainbow nation’ This option comprises a study in depth of South Africa during its transition from white minority rule to the free elections of 1994, a long, and at times, dramatic process in which South Africa changed from an apartheid state into a multi-racial democracy. Students will gain an in-depth understanding of the creation and consolidation of the apartheid regime by the National Party and the response and methods used by their political opponents in the struggle to overthrow apartheid, as well social, economic and cultural changes that accompanied this process.

Option 31: Rebellion and disorder under the Tudors, 1485–1603

This option comprises two parts: the Aspects in breadth focus on long-term changes and contextualise the Aspects in depth, which focus in detail on key episodes.

Together, the breadth and depth topics explore the nature of rebellion and disorder under the Tudors and the way the various challenges were met, the nature of change in government over the period and the changing relationship between the Crown and key sections of society. The option enables students to explore the way in which, despite a shaky start, the Tudors were able to establish their dynasty as one of the most powerful England has seen.

Coursework

The purpose of this coursework is to enable students to develop skills in the analysis and evaluation of interpretations of history in a chosen question, problem or issue as part of an independently researched assignment. The focus is on understanding the nature and purpose of the work of the historian. Students will be required to form a critical view based on relevant reading on the question, problem or issue. They will also be specifically required to analyse, explain and evaluate the interpretations of three historians.

How you will be assessed

Paper 1 – 2hr 15 min examination (30%)

Paper 2 – 1hr 30 min examination (20%)

Paper 3 – 2hr 15 min examination (30%)

Coursework – 3000–4000 words (20%)

Entry Requirements

The course covers a range of time periods and focuses on different aspects of history (e.g. change and continuity). The history A Level course is varied in both its subject matter and the manner through which it is taught, which we hope makes it enjoyable! A strong result in GCSE English and GCSE history will be beneficial.

Career Link

By studying history, you may have the opportunity to pursue one of the following careers:

- Secondary school teacher.
- Journalist.
- Civil Service administrator.
- Solicitor.
- Archivist.
- Curator.



Further Maths

Course Overview

A Level further mathematics is a full 2-year course and is designed to be taught alongside A Level mathematics. A Level further mathematics is a challenging, yet rewarding course which further builds upon the methods you develop in A Level mathematics as well as introducing newer, more advanced areas. The course is broken down into three main areas; core pure mathematics, further statistics and decision.

How will you learn?

Through discussion, you will develop your understanding and become better at thinking logically and analytically. By solving problems, you will develop resilience and be able to think creatively and strategically.

How will you be assessed?

You will sit four 90-minute papers at the end of the two-year course. Two papers will cover the core pure content, one paper further statistics and one paper decision. All papers are equal weighted at 25%.

Entry Requirements

An excellent understanding of all aspects of GCSE mathematics is required for success at A Level. You must have taken the higher GCSE paper and a pass at grade 8 or above is recommended.

Career Link

Careers linked to A Level further maths could include: acoustic consultant, actuarial analyst, actuary, chartered accountant, chartered certified accountant, data analyst, data scientist, investment analyst, research scientist (maths), secondary school teacher, software engineer, statistician and many more.

Other Useful Information

A Level further mathematics would be an ideal choice for those students thinking of studying mathematics in higher education or a course involving a heavy use of mathematical skills. Some universities state further mathematics as a prerequisite for a select number of courses.

Assessment & Structure

Learners will study:

Core Pure Mathematics

- Complex numbers.
- Argand diagrams.
- Series.
- Roots of polynomials.
- Volumes of revolution.
- Matrices.
- Proof by induction.
- Integration.

Further Statistics

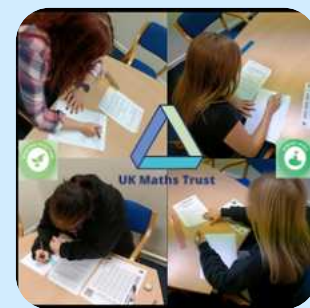
- Discrete random variables.
- Poisson distributions.
- Geometric and negative binomial distributions.
- Central limit theorem.
- Chi-squared tests.

Decision

- Algorithms.
- Graphs.
- Networks.
- Linear programming.
- Critical path analysis.



Maths



Course Overview

A Level mathematics is an interesting and challenging course which extends the methods you learned at GCSE as well as introducing new areas. The course is broken down into three main areas; pure mathematics, statistics and mechanics.

Assessment & Structure

Pure Mathematics

- Proof.
- Algebra and functions.
- Coordinate geometry.
- Sequences and series.
- Trigonometry.
- Exponentials and logarithms.
- Differentiation.
- Numerical methods.
- Vectors.

Statistics

- Statistical sampling.
- Data presentation and interpretation.
- Probability.
- Statistical distributions.
- Statistical hypothesis testing.

Mechanics

- Quantities and units.
- Kinematics.
- Forces and Newton's laws.
- Moments.

How will you learn?

Through discussion, you will develop your understanding and become better at thinking logically and analytically. By solving problems you will develop resilience and be able to think creatively and strategically.

How will you be assessed?

You will sit three two-hour examinations at the end of the two-year course. Two of the three papers assess your understanding of pure mathematics with the third covering both statistics and mechanics.

Entry Requirements

A good understanding of GCSE mathematics, particularly the algebraic content, is required for success at A Level. You must have taken the higher GCSE paper and a pass at grade 7 or above is recommended.

Career Link

A Level mathematics can open the door to many employment and higher education opportunities. Not only is it a prerequisite for those wanting to study mathematics at university but it is also a must have for subjects like physics, engineering and economics. It also plays a key supporting role in areas such as IT, chemistry, biology and business. Possible careers involving use of A Level maths could include: accounting, medicine, engineering, forensic pathology, finance, business, consultancy, teaching, IT, games development, scientific research, programming, the civil service, design, construction and astrophysics to name a few. Specific job roles include actuary, business analyst, software engineer, technology analyst, information engineer, speech technology researcher, and maths teacher.



AAQ Mental Health: Individuals & Society

Course Overview

The AAQ in Mental Health: Individuals & Society (Extended Certificate) is for students aged 16–19 years old. You will have the opportunity to learn key knowledge and understanding in the subject and apply what you learn to real-life contexts, such as:

- Understanding the range of factors that can influence our mental health and the potential effects they can have.
- Identifying strategies that can be implemented to make a positive difference in the lives of individuals and communities.
- Using monitoring tools to understand individuals' mental health and wellbeing, and considering the factors that influence us and the strategies that can be used to effectively improve the lives of individuals.

What you will study when you take this qualification

Through a combination of theoretical study and hands-on experience, you will develop the necessary knowledge and skills that can support progression to higher education or employment/training.

The qualification has four mandatory units and two optional units.

Fundamentals of mental health and the individual. This unit is assessed by an exam. In this unit you will learn about the key topics that are important for the mental health and wellbeing of an individual.

Mental health, wellbeing and society. This unit is assessed by an exam. In this unit you will learn about how perceptions of mental health in society have changed over time and how this has affected the treatment of and care for people with mental health disorders. You will also learn about what the provision of support for mental health and wellbeing in society is like today and the current societal influences on mental health and wellbeing.

Supporting and promoting mental health and wellbeing in organisations. This unit is assessed by an assignment. In this unit you will learn about how organisations support the mental health of their employees. You will learn how to identify the ways work can impact mental health, best practices for monitoring, influencing and improving mental health through communicating a mental health campaign.

Community-based support for mental health and wellbeing. This unit is assessed by an assignment. In this unit you will learn about social connectedness, why it's important and how it can be improved. You will learn about the benefits, processes, and factors affecting social prescribing and how it can be used to support improvements in mental health and wellbeing.

Supporting mental health and wellbeing with physical activity. This unit is assessed by an assignment. In this unit you will learn about physical activity and its impact on mental health and wellbeing. You will also learn how to plan physical activities to support improvements in mental health and wellbeing and how physical activity participants can be supported to ensure effective participation and engagement.

Supporting mental health and wellbeing with outdoor and creative activities. This unit is assessed by an assignment. In this unit you will learn about how the role of nature connectedness and the outdoors can support improvements in mental health and wellbeing. You will also learn about the different types of outdoor activities that can be used for therapeutic purposes and the theories that underpin their use, as well as creative therapies in practice.

This qualification complements A Levels and Level 3 qualifications in:

- Health and social care
- Early Years Development
- Psychology
- Sociology
- Human biology

This course will help you progress to further study in related areas such as:

- BSc (Hons) Mental Health and Wellbeing
- BSc (Hons) Adult Nursing
- BSc (Hons) Paediatric Nursing
- BSc (Hons) Mental Health Nursing
- BA (Hons) Counselling, Mental Health and Wellbeing
- BSc (Hons) Mental Health and Wellbeing Coaching
- BSc (Hons) Health and Wellbeing • BSc (Hons) Health Studies



Music

Course Overview

In music we follow the EDUQAS A Level specification. If you want to extend and develop your musical performance and your knowledge of music theory, then A Level music is an ideal qualification to study. Typically, music has a small number of students studying it, so you will benefit from more 1:1 discussion. You will also learn through reading, research and writing essays as well as composing independently. Practice for your performances will also be independent with regular input from your teacher and regular mocks.

How will you be assessed?

Performance - Externally assessed by a visiting examiner

Composition - Externally assessed

Students can choose which option they want to follow from the choices below:

Option A

- Performance: 10 - 12 minute recital = 35%
- Composition: 2 compositions totalling 4 - 6 minutes = 25%
- Appraising exam : 2 hours 15 minutes = 40%

Option B

- Performance: 6 - 8 minute recital = 25%
- Composition: 3 compositions totalling 8 - 10 minutes = 35%
- Appraising Exam : 2 hours 15 minutes = 40%

Course content

As part of the Appraising exam, we will study:

- Haydn's 'Symphony No. 104 in D major'.
- Mendelssohn's 'Symphony No. 4 in A Major'.
- Poulenc's 'Trio for Oboe, Bassoon and Piano'.
- Debussy's 'Three Nocturns'.

Students will study 3 Areas Of Study (AOS):

AOS A {Compulsory} - The Western Classical Tradition.

One choice of AOS from:

AOS B - Rock and Pop.

AOS C - Musical Theatre.

AOS D - Jazz.

One choice from:

AOS E - Into the 20th Century.

AOS F - Into the 21st Century.

Entry Requirements

Students must have achieved a grade 5 or above at GCSE or have grade 5 theory if no GCSE.

As well as this, students will need to produce a performance and a composition; therefore learners will be expected to have regular instrumental lessons and to attend extracurricular ensembles.



Performing Arts (Drama)

Course Overview

The course gives students the opportunity to develop a range of transferrable skills such as critical and analytical thinking, the ability to express complex ideas clearly and the ability to think for themselves. Teaching groups are often small and lessons are mainly practical.

Drama complements a range of BTEC and A Level subjects in humanities, arts and languages and can help with university applications in those areas. Visiting the theatre is an essential part of the course as students will need to write about theatre they have seen. Students who study drama can go on to careers in the performing arts but also in many other areas too. Past students of drama now work as directors, architects, journalists, lawyers, actors, dancers, cameraman, media editor, costume design and in water/waste management!

Assessment & Structure:

Unit 1—Investigating Practitioners' Work. Students will practically investigate two different practitioners, their methods of working, plays performed in their style and then write about them in a typed exam.

Unit 2—Developing Skills and Techniques for Live Performance. Students will develop their knowledge of stylistically different plays, rehearsing and performing key extracts alongside keeping a log book journal of key decisions. They will also investigate different ways into acting, universities, the life of an actor as well as set themselves clear targets on how to improve their own acting range.

Unit 3—Group Performance Workshop. Students will create a devised performance piece in the style of a recognised theatre practitioner. Alongside this, they will write detailed critical notes of the creative process.

Unit 19—Acting Styles. Students will explore three practitioners and then perform a key extract from one of them. They will keep a logbook of all decisions made in the rehearsal process as well as undertake research into each practitioner.

How you will learn

You will learn through rehearsal and performance of scenes, workshops of different styles, going to the theatre, critical reading, research and writing logbooks. Each week will be different and full of varied activities – one week you might present a fact file on a favourite actor and then the next might be rehearsal of a naturalistic play. Alternatively, you could be performing work in front of your family and friends and then undertaking a range of workshops using Brechtian techniques.

Entry Requirements

The course involves a critical study of plays, practitioners and styles of acting from throughout history and is open to anyone with an interest in exploring these practically and theoretically.



Philosophy & Ethics

Course Overview

How can we make difficult decisions about today's moral issues? Why are we here? Does God exist? Why do people suffer? This course provides the opportunity to find out how others have tackled a range of philosophical and ethical questions and to develop your own ideas.

How will you be assessed?

Unit One: Ethics

- Normative ethical theories – the application of ethical theory to two contemporary issues of importance.
- Ethical language.

Unit Two: Philosophy of Religion

- Ancient philosophical influences.
- Arguments about the existence or non-existence of God.
- The nature and impact of religious experience.
- The problem of evil.
- The nature of the soul, mind and body.
- The possibility of life after death.

Unit Three: Developments in Religious Thought

- Religious beliefs, values and teachings, their interconnections and how they vary historically and in the contemporary world.
- Sources of religious wisdom and authority.
- Practices which shape and express religious identity, and how these vary within a tradition.

Course content

The course gives students the opportunity to develop a range of transferable skills such as critical and analytical thinking, the ability to express complex ideas clearly and the ability to think for themselves.

- Teaching groups are often small.
 - Philosophy & Ethics complements a range of A Level subjects in humanities, arts and sciences.
 - For those with university in mind, entry to any arts or humanities course can be gained
- A Level examination involves answering essay questions.

How will you learn?

You will learn through discussion, group-work, reading, research and writing essays.

Skills needed to succeed

The course involves a critical study of philosophy, ethics and religion and is open to anyone with an interest in exploring these subjects – you certainly do not need to be religious. A strong result in GCSE English language will be beneficial.

Career Link

Careers linked to religious studies include police officer, teacher, medicine, religious leader, youth/ community worker, hypnotherapist, human resources, GP, examiner, law, armed forces.



Photography

Course Overview

The course provides candidates with a vast range of photographic skills, explores different concepts giving them the opportunity to produce a personal and inventive portfolio of work as well as the experience of working with a broad range of media, including traditional and new media technologies. Students will be encouraged to develop their intellectual, imaginative, creative and intuitive attributes. You will need to learn to be investigative, analytical, experimental and practical in your use of technical and expressive skills, aesthetic understanding and critical judgement. They should be able to demonstrate some prior knowledge or have a strong interest in art or photography in order to study this course. Studio 22 is a bespoke space for sixth form students, the studio is always open for art and photography students to work on their projects, access the dark room and use specialist equipment.

Assessment & Structure:

60% Personal Investigation

40% Externally set task

What skills will I gain doing photography?

- You will gain knowledge, understanding and application of photography, art, craft, design, media (traditional and new) and technologies in contemporary societies and cultures.
- You will gain an awareness of different roles, function, audiences and consumers of photography, art, craft and design practice.
- You will experience working within relevant and real frameworks and where appropriate, make links to the creative industries.
- You will explore digital, traditional and experimental photography, video media, materials, techniques and processes.
- You will develop your own ideas, refining your own intentions and personal outcomes.
- You will present all your portfolio in an exhibition at the end of the course.

Career Link

Possible careers in media and lens-based media

- Photo journalist
- Fashion photographer
- Site photographer
- Wedding photographer
- Film producer
- Teacher



Physical Education

Course Overview

Open up the world of sport. The course encourages students to immerse themselves in the world of sports and PE with the chance to perform or coach a sport and delve into the how and why of physical activity and sport. Students receive a well-rounded and full introduction to the world of PE, sport and sports science. This complete grounding in the subject provides a fantastic base from which to build when they move on to higher education, employment or further training. Students can develop a range of practical skills, including communication using appropriate language, dealing with pressure, split second decision-making, analysing and evaluating performance and more.

How will you be assessed?

A Level examinations are completed at the end of the two-year course and involve the completion of 3 written exams. You will also complete a practical assessment in one sport and a talk based on the analysis and performance of an athlete in your chosen sport.

01 - Physiological factors affecting performance
90 marks - 2 hour written paper

- Applied anatomy and physiology.
- Exercise physiology.
- Biomechanics.

02 - Psychological factors affecting performance
60 marks 1 hour written paper

- Skill acquisition.
- Sports psychology.

03 - Socio-cultural issues in physical activity and sport
60 marks 1 hour written paper

- Sport and society.
- Contemporary issues in physical activity and sport.

04 - Performance in physical education
60 marks - Non-exam assessment

- Performance or coaching.
- Evaluation and analysis of performance for improvement.

Entry Requirements

In order to complete this course, it is advisable that you are regularly performing in a sport outside of school.

Career Link

A Level physical education can open up a range of career opportunities including: sports development, sports coaching, physiotherapy, personal training or becoming one of the next generation of PE teachers. The transferable skills you learn through your study of physical education, such as decision making and independent thinking, are also useful in any career path you choose to take.



"I chose A level PE because it will support me getting onto the degree that I want to do at university. I enjoy many topics however my favourite is anatomy and physiology because I am fascinated by the functions of the human body. Whilst it is challenging, the support from staff and the time they can allocate to each student is hugely beneficial"

Noah, Year 12 PE Student Ambassador



Physics



Course Overview

The department prides itself in moving with the times and using a plethora of teaching and learning techniques. A minimum of 12 practical activities are planned throughout the two-year programme and class sizes are kept small to ensure that each student reaches their potential. The science labs are well equipped for practical lessons.

Why Physics is a valued qualification?

- An enquiring mind—physicists are interested in discovering how things work.
- Mathematical ability—physicists describe events using mathematical equations and computer modelling.
- Good powers of observation—physicists need to look at events objectively and record observations accurately.
- Practical ability—physicists need to design, build and use apparatus to explore properties of the real world.
- Adaptability—physicists need a readiness to learn new skills throughout their life to cope with advances in science and technology.
- Social skills—physicists need to talk and discuss their theories and observations with others and communicate their ideas clearly
- A sense of humour—especially important if things do not go as planned!

Assessment & Structure:

The A Level is made up of three examination papers with questions presented as multiple choice and/or structured questions, alongside extended response questions to cover theory and practical skills.

OCR Syllabus A

The physics content is split into six teaching modules:

- Development of practical skills in physics.
- Foundations of physics.
- Forces and motion.
- Electrons, waves and photons.
- Newtonian world and astrophysics.
- Particles and medical physics.

Entry Requirements

To study A Level physics, we recommend that students have at least a grade 6 in GCSE physics (separate science) or grade 7 for combined science, as well as a grade 7 in maths.

Careers Link

Physics is a useful subject for the majority of STEM (science, technology, engineering and maths) careers and you'll find physicists everywhere, in industry, transport, government, universities, the armed forces, the secret service, games companies, research labs and more.



Politics

Course Overview

Studying Edexcel politics will give students the opportunity to learn about the political systems in the UK and USA. Students will study political ideologies, election systems and look at some of the most relevant elections in recent British and American History. A Level politics will provide insight into political beliefs central to an understanding of the modern world. It also develops analytical and evaluative skills in relation to interesting topics prevalent in the turbulent political climate of today. The course also provides foundation of political knowledge on which to develop skills for citizenship and university study. Example degree courses which generally require or accept politics A Level include politics, economics, journalism, law, international relations, history and social policy. Within the Edexcel specification, topics covered currently include democracy in the context of the UK, political parties, electoral systems, voting behaviour and the role of the media, UK constitution and parliament, the EU, the US Constitution, US federalism, US Supreme Court and civil rights and US Congress.

How will I be assessed?

Paper 1 – UK Politics

- Types of government and democracies.
- Election systems.
- British political parties and core political ideas.
- Voting behaviour and the media.

Paper 2 – UK Government

- UK Constitution.
- Role of the Prime Minister and the executive.
- Relations between branches of government.
- Case studies of elections.

Paper 3 – US Government

- US Constitutions and Federalism.
- US Congress & Presidency.
- Supreme Courts & Civil Rights.
- Democracy & Participation.
- Comparative approaches.

or

Paper 3 – Global Politics

- The state and globalisation
- Global governance: political and economic
- Global governance: human rights and environmental
- Power and developments
- Comparative theories.

What skills will you get from studying politics?

Studying this subject will develop your understanding of structures of authority and power, how political systems differ, and enable you to interpret, evaluate and comment on the nature of politics and government. You will also develop a range of transferable analytical, debating and communication skills – all of which are valuable in a wide range of careers.

Career Link

An A Level in politics provides an excellent background for careers in law, journalism, the caring professions, teaching, and a range of management and business areas.



"I chose to study Politics because I think it is very relevant and important to understand how the U.K. is governed and to develop your own political opinions to gain a clear understanding of who you would like to run the country – overall making politics very relevant to modern life. Learning in Politics involves discussion and thinking critically about various viewpoints. Essay writing helps you to articulate your ideas and prepare you with valuable future skills. I intend to continue to study at University after Sixth Form and I believe politics provides me with valuable skills such as thinking critically and comparing different viewpoints and writing formal, structured essays to help me prepare for this path."

Jack, Year 12 Politics Subject Ambassador

Psychology

Course Overview

Do you want to know why people become criminals and how to catch a criminal? Are you fascinated by the idea of understanding how the brain works? Do you want to grasp the complexities of human behaviour? If you have answered 'yes', then psychology A Level is for you! In lessons, you will be exploring the following topics: memory; attachments; abnormalities in behaviour; physiological responses to stress and treatments; forensics; and psychological research methods. Most importantly, psychology will give you an opportunity to learn, understand and evaluate issues happening around you in everyday life, which can then be applied to the wider world. We offer a selection of facilities to help students through their psychology course. You will be given the opportunity to study many core areas in psychology, thus giving you a broad knowledge of the subject. You will sit three exams at the end of Year 13; each will be two hours long.

Assessment & Structure:

Content covered in Year 12

Paper 1: Introductory Topics in Psychology:

- Social Influence.
- Memory.
- Attachment.
- Psychopathology.

Paper 2: Psychology in Context:

- Approaches in psychology.
- Biopsychology.
- Research methods.

Content covered in Year 13

Paper 3: Issues and Options in Psychology

- Issues and debates in psychology.
- Relationships.
- Stress.
- Forensic psychology.

How will you learn?

Through discussion, you will develop your understanding and become better at thinking logically and analytically. By solving problems, you will develop resilience and be able to think creatively and strategically.

Skills needed to succeed in psychology

There needs to be a high level of commitment and the willingness to work independently and continuously throughout the year. Students need to enjoy researching studies and writing essay-based answers.

Which subjects does psychology work well with?

Any subjects which involve analysing and evaluating material. Psychology works well in particular with English, sociology, biology and health & social care.

Entry Requirements

No specific subjects are required but a good level of English and maths would be advantageous.

Career Link

Psychology compliments many subjects taught in the sixth form either through the topics taught or the skills acquired. Psychology focuses on how the mind works, human behaviour and developing critical thinking skills all of which are attractive to employers. Psychology also provides students with skills in research, analysis, communication and organisation. It is essential for students wishing to pursue a career in psychology, for example, as an educational, forensic or clinical psychologist amongst others. Students who study psychology at university do pursue employment in areas not directly linked to psychology, for example: teaching, nursing, police, local government, retail, social work and many others.

"I decided to choose psychology as I found this subject interesting at GCSE and wanted to continue this subject for my A – Levels. I enjoy psychology as I find it fascinating how the human mind works and how different situations lead to people reacting in different and unnatural ways. It is interesting to see how different scenarios and situations trigger people's emotions and actions. With the teachers in psychology, they make the learning interesting and engaging for all, this makes the lessons fun and interesting all the time, meaning you'll never find yourself staring into space during psychology. Psychology for me personally, is a beneficial subject as I would like to become an Air Ambulance Paramedic, this subject will allow me to be prepared for how to calm down situations, but also know how people will react in different difficult situations."

Josh, Year 12 Psychology Subject Ambassador



Sociology

Course Overview

In sociology, we study the way people are affected by society, and how society is affected by people. Some sociologists see the behaviour of individuals as determined by how they are raised and educated, what media they are exposed to, how rich or poor they are, whether they are male or female, black or white. Others see individuals as powerful in shaping society. We discuss real world events and ask students to challenge common sense assumptions they may hear about in the news. Sociology will change the way you view the world.

How will I be assessed?

Content covered in Year 12:

Paper 1 Education with Methods in Context:

- Education.
- Methods in Context.

Paper 2 Research Methods and Topics in Sociology:

- Families and Households.
- Research Methods.

Content covered in Year 13:

Paper 2 Topics in Sociology:

- Beliefs in Society

Paper 3 Crime and Deviance with Theory and Method:

- Crime and Deviance.
- Theory and Methods.

There will be three exams in June of Year 13 each of which will be two hours long.

Skills needed to succeed in sociology

There needs to be a high level of commitment and the willingness to work independently and continuously throughout the year. Students need to enjoy writing essay-based answers.



"As a sociology ambassador, I enjoy my subject because I have the opportunity to expand my knowledge on the different viewpoints and perspectives regarding a variety of social constructs and institutions. Additionally, I believe that by studying sociology at A-level, students can gain a deeper understanding about how society and our values are cemented"
Ellie, Year 12 Sociology Subject Ambassador.

Which subjects does sociology work well with?

Any subjects which involve analysing and evaluating material. Sociology works well in particular with English, history, geography, government & politics, philosophy & ethics and health & social care.

Entry Requirements

No specific subjects are required but a good level of English and maths would be advantageous.

Career Link

Sociology compliments all areas and subjects. You will learn to critically question common sense assumptions, to solve problems, to work independently and as part of a group and to write a clearly structured, analytical essay. All of this is excellent preparation for university. Sociologists go on to work in the media, law and other institutions of criminal justice, public relations, market research, social work, foreign aid and teaching. Many also continue with their academic studies in sociology, and remain in the academic field researching aspects of sociology.



Spanish

Course Overview

The A Level Spanish course is designed to encourage students to develop their understanding of the spoken and written forms of Spanish. Throughout the course students will learn how to communicate confidently, clearly and effectively in Spanish for a range of purposes through the study of a range of contemporary issues which are relevant to today's young people. The important skills of translation, debate and critical evaluation are developed during the course. In addition to linguistic study, students will develop a greater awareness and understanding of the contemporary society, cultural background and heritage of Spain and other Hispanic countries. In Year 13, students complete an individual research project on a topic of their choice, as well as studying Hispanic literature and film. This course provides an excellent foundation to Higher Education, whilst forming capable linguists for the increasingly competitive global economy.

Assessment & Structure:

Year 12 Topics

Social Issues/Trends

Aspects of Hispanic society:

- Modern & Traditional Values.
- The 'cyber-society'.
- Equal Rights.

Political and artistic culture

Artistic culture in the Hispanic world:

- Modern day idols.
- Spanish regional identity.
- Cultural heritage.

Year 13 Topics

Social Issues & Trends

Multiculturalism in Hispanic society:

- Immigration.
- Racism.
- Integration.

Political and artistic culture

Aspects of political life in the Hispanic world:

- Today's youth, tomorrow's citizens.
- Monarchies & dictatorships.
- Popular movements.

Cultural Aspects

Study of a play / novel by a Hispanic playwright / author.

Study of a film by a Hispanic director.

Individual research project (IRP)

How will you be assessed?

Paper 1 – Listening, reading & writing (50%) – written examination – 2.5 hours.

Paper 2 – Writing (20%) – written examination – 2 hours.

Paper 3 – Speaking exam (30%) – spoken examination – 16–18 minutes.

Career Link

Employers value language skills and research has shown that using language skills in business opens the door to a wide range of economic, social and personal benefits.

Employers value language skills for the following reasons:

- Employers are looking to employ people with conversational language skills.
- Customers addressed in their mother tongue are much more likely to do business with you.
- Studying a foreign language improves your oral and written skills in English too, and also helps develop key communication skills that are crucial in the workplace.

Entry Requirements

You will need to achieve a grade 6 or higher at GCSE and have completed Higher Tier papers.



chichen itza

Sports Studies

Course Overview

The course brings together knowledge and understanding with practical and technical skills. This is achieved through students performing vocational tasks which enables them to gain valuable experiences in the sports industry and encourages the development of transferable skills. Transferable skills are those such as communication, teamwork, research and analysis, which are valued in both higher education and the workplace. Students develop the skills required to enter the world of sport and leisure or progress to Higher Education studies in related areas. Students will not only gain A Level equivalents in sport development, fitness and exercise, but also gain further qualifications through leadership and NGBS of sport.

We offer 3 different courses:

- Extended certificate (1 A Level equivalent) 4 units.
- Diploma (2 A Level equivalent) 9 Units.
- Extended Diploma (3 A Level equivalent) 14 Units.

How will I be assessed?

Year 1

Unit 1: Anatomy and Physiology.

Unit 2: Fitness training and programming for health, sport and well-being.

Unit 4: Sports Leadership.

Unit 7: Practical sports performance.

Unit 19: Development and provision of sport and physical activity.

Unit 22: Investigating business in the sport and active leisure industry.

Unit 23: Skill acquisition in sport.

Year 2

Unit 3: Professional development in the sports industry.

Unit 5: Application of fitness testing.

Unit 8: Coaching for performance.

Unit 9: Research methods.

Unit 17: Sports injury management.

Unit 25: Rules, Regulations and Officiating in Sport.

Unit 29: Exercise for specific groups.

Entry Requirements

In order to complete this course, it is recommended that you have either studied GCSE PE or Level 2 sports studies, but, not a requirement. It is advantageous to have an interest and future ambitions to enter the sports industry.

Career Link

BTEC sports studies can open up a range of career opportunities including: sports development, sports coaching, physiotherapy, personal training or becoming one of the next generations of PE teachers.

The transferable skills you learn through your study of sports studies such as decision making and independent thinking, are also useful in any career path you choose to take.



Pride



Respect



Kindness

