

Friday Focus



Issue 188 | January 2026

Highlights of this week's news at school and forthcoming events

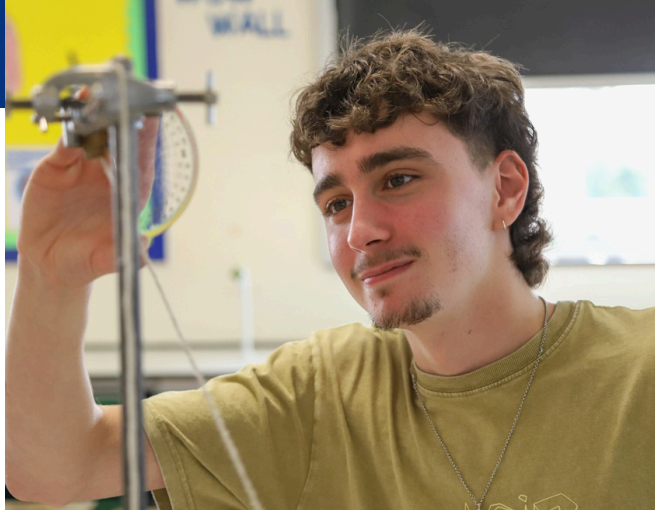


Photo of the week
#weareblythe



UCAS Deadline

Pride • Respect • Kindness

YEAR 13 FUTURES

Huge congratulations to our Year 13 students who have already submitted their UCAS applications. We're thrilled to see some fantastic offers coming from such a wide range of subjects. Students have had offers from universities across the UK to study subjects including forensic psychology, mental health nursing, physics and astrophysics, computer science, physiotherapy, sociology and social policy and aerospace engineering!

Sam and Hannah are awaiting the results of their interviews at Oxford University to study geography and Keele University to study veterinary science. We have a number of students currently interviewing for teaching and NHS-based degree courses such as Nursing, Midwifery and Speech and Language therapy. Best of luck to everyone who has an interview over the coming weeks, we are all rooting for you!

If you need any support, please speak to your form tutor or a member of the sixth form team.



WE NEED YOU

Careers Fair

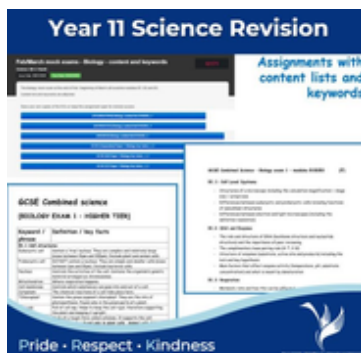
Friday 30th January 2026



Pride • Respect • Kindness

CAREERS FAIR

Preparations have started for our annual Careers Fair, which will take place on Friday 30th January 2026 from 9:00am to 12:00pm. We will have over 30 representatives supporting the event from colleges, universities, apprenticeship providers, and other industries. We are searching for local companies and employers that can attend and speak to our Year 11 – 13 students about careers and opportunities in a varied range of sectors. The event is always a wonderful success and gives students an opportunity to explore their options for the future. If you would like to know more information, or if you are able to attend, please contact Mr Goodwin at m.goodwin@bb-hs.co.uk



Year 11 Science Revision

Assignments with content lists and keywords

Pride • Respect • Kindness

SCIENCE REVISION

Mr Flavell has set an assignment on Frog which includes links to a huge range of resources for Year 11 students to use to support independent study. These include knowledge organisers, keyword definitions and quizzes. There are even specific resources for students studying separate science. It is great to hear that so many students have already accessed the revision session videos which have staff explanations alongside presentations of key concepts.

WELCOME

As part of our personal development and wellbeing curriculum, Mrs Owen has delivered assemblies this week to Year 7-11 on staying safe. This has included a range of topics including staying safe online and reminding students how to report issues in school to the safeguarding team. Staff have noted that some students have asked a number of follow-up questions afterwards which is encouraging to know. In addition, our monthly e-safety newsletters are emailed to parents/carers and all visitors to our school receive safeguarding and safety advice when they arrive to sign in, ensuring that safeguarding remains a priority for us all.

Mrs Johnson
Headteacher

Pride, Respect & Kindness



SWIM LAUNCHES AFTER-SCHOOL LESSONS

After-school swimming lessons began this week as Swim launched its out-of-school Learn to Swim programme at our swimming pool. Olympic champion Rebecca Adlington joined the first sessions, welcoming young children and their families to the pool.

If you would like to make an enquiry (after school lessons are aimed at children aged 3–11), please visit: <https://www.swim.co.uk/centre/stoke-blythe-bridge/>



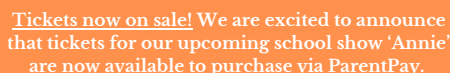
At the end of this week, Mrs Kadri will be giving out chocolate prizes to those nominated for demonstrating pride in their uniform and appearance.



"I study Geography, Health and Social and Child Development. I picked BBHS because it is a good school, and all my friends also chose to go Blythe so that was one of the main reasons. In addition, I really like the teachers of the subjects that I have picked, which is a good extra. The best thing so far has been the added opportunities, such as Tomorrow's Teachers: the ability to become an ambassador for Geography, and being a house captain. Tomorrow's Teachers is perfect if you are looking to become a teacher of any form in the future, whether it is primary, secondary, or special needs education because it helps you to gain an insight into different teaching environments through our visits to the different schools. I also like the geography trips. We went to Chester Zoo and we are planning to go to Wales in the summer."



"I only got into anime and manga last year, but Hunter x Hunter has become one of my favourites so far. I'm about halfway through, and I love how the story mixes adventure, humour, and tense moments. Gon is such a likeable main character who is on his journey to become a Hunter, which is basically someone licensed to explore dangerous places, track rare creatures, and takes on missions normal people can't handle. I also really like the characters Gon meets along the way. The artwork is amazing, especially the action scenes, and even though reading backwards felt strange at first, I got used to it quickly. I still don't know how it ends yet, but I'm excited to keep reading and see what happens to all of them."



- Full page: £80 + VAT (£96)
- Half page: £50 + VAT (£60)
- Quarter page: £30 + VAT (£36)

Year 11 Revision

Rank	School	Value
1	Wythe Bridge High School State on Trent, Staffordshire	150,381
2	[Redacted] School Staffordshire	115,422
3	[Redacted] School Staffordshire	94,352
4	[Redacted] School Staffordshire	53,848
5	[Redacted] Staffordshire	31,878
6	[Redacted] School Staffordshire	14,634

Pride • Respect • Kindness

WELL DONE YEAR 11

Well done to all those Year 11 students who are engaging with the online revision resource Seneca. Due to the number of the hours you have spent studying outside of the classroom this week, our school is currently top of the leaderboard for schools within our MAT and placed 9th for engagement from the whole of our region! Parents are able to monitor their child's engagement by accepting an email invite sent by Seneca. If you don't receive this, please let us know.



SCIENCE BEYOND THE CLASSROOM

We are proud to celebrate Lexi C (Year 7) who, after learning about classification of species in science lessons, independently researched newly discovered species as real-life examples of how scientists classify living things 🧑🔍 Her curiosity and initiative is fantastic to see, and Miss McFarlane was so impressed by the way she applied her classroom learning beyond the lesson. Brilliant work, Lexi - a great example of scientific thinking in action! 🌟🌟🌟



Year 11: Revision skills

KEY DATES

- Year 11 GCSE Food Exam

- Primary Cluster Concert

- Careers Fair



CAREERS SPOTLIGHT - BENCHMARK 4 CAREERS IN THE CURRICULUM + BENCHMARK 2 LMI

This week in Citizenship and Careers, students have been developing the knowledge and skills they need to make confident choices about their future. Year 7 explored how they learn best and what type of learners they are, Year 8 focused on the importance of personal attributes and transferable skills, Year 9 considered GCSE options and next steps, and Year 10 investigated post-16 routes, using Labour Market Information (LMI) alongside impartial careers advice and guidance to understand real opportunities.

How to use the Careerometer

The Careerometer is a simple way for you to find out more about a specific industry, what it is like in the job you're interested in and then select it from the drop down menu to compare which route you would prefer to go down. You can find information from engineering to public services, hair and beauty plus much more!

Registered children's nurses		UK average	
Weekly Pay	Annual Pay	Weekly Pay	Annual Pay
£720	£37,440	£505	£26,260
Hours/Week	£394	Hours/Week	£13
39h	£18	37.5h	
Workforce Change (projected)	Workforce Change (projected)		
Grows 8.6%	Grows 6%		
The workforce is projected to grow by 8.6% over the period to 2024, compared to	The workforce is projected to grow by 6% over the period to 2024, compared to		
You might find this job in	This is the average combined for all education across the country		
Health	Education		
Health	Education		
Residential care	Education		
Social work	Education		
Public administration	Education		
Public administration	Education		
More info	Clear card	Clear card	

ASSEMBLIES

Year 11: Reaseheath College

Year 12 & Year 13 How to make the most of the Careers Fair



Group	Block 4 (5) 12 th Jan-13 th Feb
Year 7 Girls AC	Dance
Year 7 Girls DV	OAA
Year 7 Boys AC	Swimming
Year 7 Boys DV	Handball
Year 8 Girls AC	HRE
Year 8 Girls DV	Dance
Year 8 Boys AC	Basketball
Year 8 Boys DV	Football
Year 9 Girls AC	Volleyball
Year 9 Girls DV	Dance
Year 9 Boys AC	Handball
Year 9 Boys DV	Swimming



RE M I N D E R

A reminder for students to check their timetables and bring in the correct kit for their PE lessons with appropriate footwear. Please also remember to bring in ingredients for food technology lessons.

STUDENT LEADERSHIP



School Parliament

Year group reps - remember to canvas the views of your peers about the school area you were given. Democracy in action at Blythe Bridge High School & Sixth Form is relying on everyone's voice.

HOUSE UPDATES

Overall points update:

- Sphinx: 814 (1st)
- Centaur: 777 (2nd)
- Pegasus: 678 (3rd)
- Serpent: 676 (4th)

Events coming up over this half term include; KS3 core sports competitions, Spitfire model competition, Year 8 art competition. spelling bee, plus many more... keep your eyes peeled!



MENU CHOICE

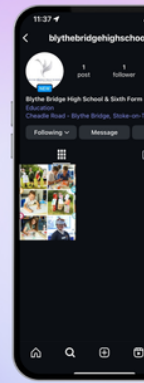
STREATERIES		LUNCH MENU:		TRADITIONAL	
 Home MON		 AMERICAN Diner TUE		 Home WED	
WEEK 2 Autumn Menu 2019/20 2019/20 2019/20 2019/20 2019/20		 Italian THU		 Chips & More FRI	
MAINS Mixed Beef Burger Trapped with Root Veg		BBQ Chicken & Chicks & Coles		Maple Glazed Pork Legume w/ Gravy Smashed new Potatoes	
Lamb, Onion & Roast Veg Merguez		Cajun Spiced Beef Burger		Honey Carrot & Apple Wellington	
SIDES Tenny Chicken & Peas		Cajun Rice & Roasted Mediterranean Veg		Cornish & Smashed Green Beans	
PASTA & NOODLE POTS		Protein Lean Chicken Bulgoghese		Classic Meatball Pasta	
Tortellini Chicken Noodleless		Classic Chicken Wings		Pulled Ham Carbonara	
DELI HOT Mexican Hot Pasta Slice		BBQ Cauliflower Crunch Wings		Chinese Style Chicken Wrap	
CHICKEN, MEATBALL & TUNA SANDWICH		MAJALA MUGGI DOL DREG		CHINESE STIR FRY CHICKEN	
FILLINGS Beef Mince & Onion		LOADED SPUDS - Smoky Spiced Mince & Aul		CHICKEN, BEEF & TUNA SANDWICH	
Roasted Tomatoes & Pepper Pasta Salad		Pasta Butterbean, Roasted Tomatoes & Spinach		Pulled Ham Carbonara Sauce	
BIG BOWL SALAD Old School Jam Cranberry Crunch		California Caprese		Loaded All The Classics	
DESSERTS Regular Chef's Specials		Baked Chocolate		Maple Apple Pie & Whipped Cream	
Daily Menu Regular Chef's Specials		Bannana Choc Chip Lard		Cinnamon, Spinach & Mustovella	
Freshly Made from Scratch DAILY!		Fresh Cut Fruit & Yogurt Parfs Available Daily		WANDCRAFTED DIPS SANDWICHES, SAGITTIES, WRAPS, SALADS & MORE!	
DELI/CHICKEN HOT GRAB & GO		Special Salad		Agave Beef or Chocolate Brownies	

Follow us on



Instagram

@blythebridgehighschool



Check this out

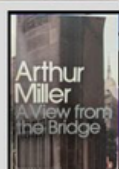


Drama Reading

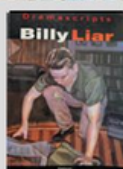
Fancy reading a playscript instead of a novel?

Every half term, the drama department will recommend **three** playscripts that you can borrow to read.

This half term's recommendations are:



A View From the Bridge is a dark and passionate play recommended for 6th Form as Eddie struggles with his feelings for his wife's niece.



Billy Liar is a teenager who aims to make his life more interesting through his 'creative' lies but everyone around him doesn't find them so interesting!



The Roses of Eyam tells the story of those brave villagers who decided to block themselves away from the rest of the world to stop the

You are very welcome to borrow these or other plays through Mrs Baines.

Did you know you can raise free donations for Blythe Bridge High School & Sixth Form every time you shop online? With over 7,500 retailers including Tesco, Amazon, John Lewis and more, a percentage of what you spend is donated to our school at no extra cost to you. Signing up takes just a moment and is completely free – simply scan the QR code below to get started and help support our students.



6 Reasons to Put Your Phone Away

by @Inner_Drive
www.innerdrive.co.uk



Lowens Concentration

Having your phone out while doing homework or revision has been shown to reduce performance by 20%.



Increases FOMO

Fear of Missing Out (FOMO), or the compulsive need to know what others are doing leads to worse moods and increased anxiety.



Increases Stress and Anxiety

Over use of mobile phones leads to increased anxiety, feelings of loneliness and low self-esteem. Reliance on mobile phones can cause irritation, frustration and impatience.



Warpes Your View of Reality

Nobody is as happy as they seem on Facebook or as wise as they appear on Twitter.



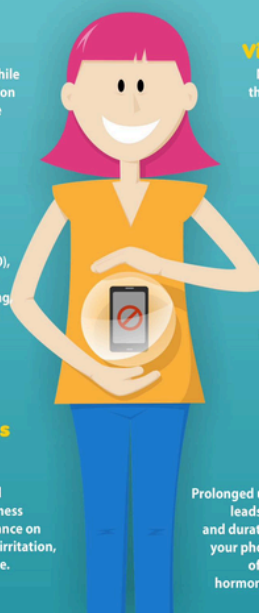
Reduces Memory

Instant messages are distracting, which often leads to forgetfulness



Makes You Sleep Worse

Prolonged use of a mobile phone leads to poor sleep quality and duration. The backlight on your phone delays the release of Melatonin, which is a hormone important for sleep.



plus
BLYTHE BRIDGE HIGH SCHOOL & SIXTH FORM
PRE-LOVED UNIFORM SHOP

If you are interested in purchasing items please email t.matthias@bb-hs.co.uk and we will let you know what we have in stock. Donations are always welcome.

Funding for Selected Routes

Full or Part-Time Routes

Gain School Experience

Train to Teach in Local Schools

Primary (3-7) • Primary (5-11) • Secondary (11-16)



The John Taylor SCITT

jtscitt.co.uk

BLYTHE BRIDGE HIGH SCHOOL & SIXTH FORM COMMUNITY LETTINGS



BLYTHE BRIDGE HIGH SCHOOL
& SIXTH FORM

Blythe Bridge High School & Sixth Form is excited to offer our school facilities to the local community and businesses.

If you are looking for a regular indoor or outdoor venue for your club or society, or a space for a one off event, we offer a range of facilities.

THESE INCLUDE

MUGA PITCHES ● GRASS FOOTBALL PITCHES ●
MAIN HALL ● CLASSROOMS ● ICT SUITES ● ART
FACILITIES ● HARD COURTS ● SWIMMING POOL



Scan the QR code for our price list and
a copy of our hire request form

01782 392519

office@bb-hs.co.uk

ST11 9PW



Free School Meals



HAVE YOU REGISTERED YET?

See if you are entitled...
It costs nothing to try, so why not give it a go!

You may be eligible for support via benefits related Free School Meals if you meet any of the following low income entitlement criteria:

- Income Support
- Income Based Job Seekers Allowance. Please note the 'new style' job seekers allowance is not a qualifying benefit.
- Income Related Employment and Support Allowance. Please note the 'new style' employment and support allowance is not a qualifying benefit.
- Eligible for Child Tax Credit but not Working Tax Credit and the household income (as used by HMRC to assess tax credits) is not more than £16,190.
- The Guarantee element of State Pension Credit
- Support under part VI of the Immigration and Asylum Act 1999
- In receipt of the 4 week run on of working tax credit
- Universal credit (provided you have an annual net earned household income of no more than £7,400 as assessed by earnings from up to three of your most recent assessment periods). Your net earned income is your household income after taxes and deductions and does not include income from Universal Credit or any other benefits you may receive.

Even if your child prefers packed lunch, it is worth registering to receive benefits such as:

- A discounted place on some school trips
- Year 6 Headstart pack on transition including one school tie and headphones
- 20% voucher for National Schoolwear, Hanley
- Access to free food and activities during the school holidays

Help the school by registering for Free School Meals!

By registering for Free School Meals, you will also allow school to receive PUPIL PREMIUM, which is extra money from the government to support children from families on lower incomes. The funding that school receives can be used for a range of interventions including help with costs of school trips, music fees, teaching assistant staff, after school programmes and equipment.

The Pupil Premium strategy can be found on the school website.

Holiday Activities and Food



www.staffordshire.gov.uk/Education/Educational-awards-benefits/Holiday-activities-and-food/Holiday-Activities-and-Food.aspx



To apply, visit the Staffordshire County Council website
www.staffordshire.gov.uk/education/educational-awards-benefits/freeschoolmeals/apply-online.aspx